



Verband Hamburger
und Bremer
Schiffsmakler e.V.

New ConTex Container Ship Time Charter Assessment Index

New ConTex*		1421	
30.01.25		6 mos	12 mos
Geared	1100 TEU	\$14.727	n.a.
	1700 TEU	\$26.186	
	2500 TEU	\$31.468	
Gearless	2700 TEU	n.a.	\$34.059
	3500 TEU		\$41.270
	4250 TEU		\$52.980

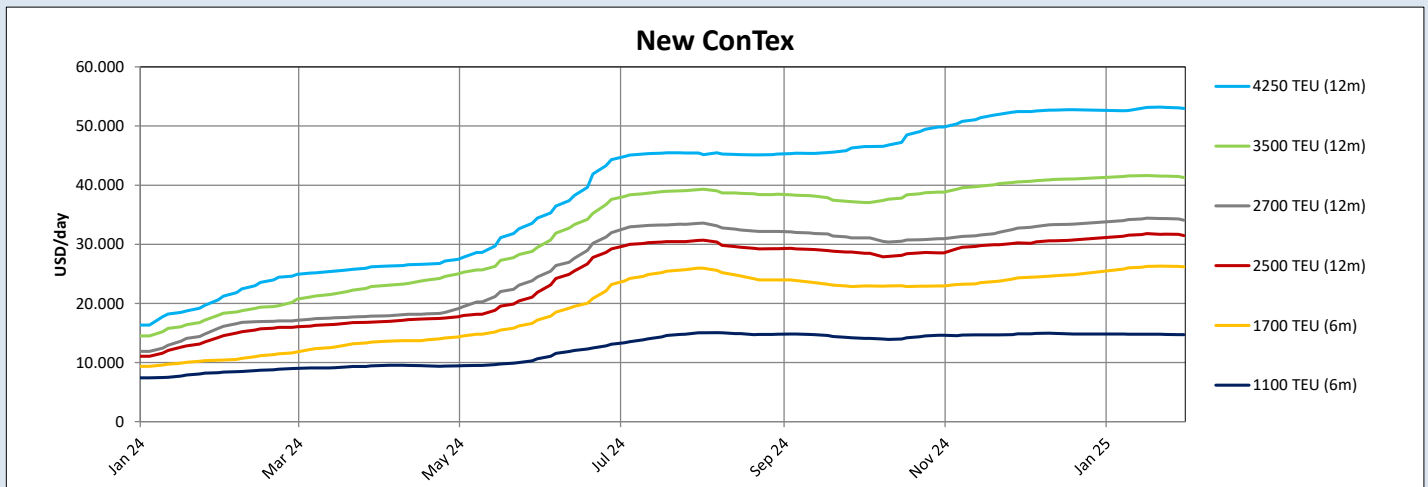
Legend		
↑	up	+ 2% or more
↗	steady up	from +1% to +1,9%
→	steady	+/- 1%
↘	steady down	from -1% to -1,9%
↓	down	- 2% or less

*New ConTex evaluation is EXCLUDING 1800 TEU for 6 months period, 1100/1700/5700/6500 TEU groups for 12 months period & 2500/2700/3500/4250 TEU groups for 24 months period

New ConTex-Commentary - issued: 30.01.25

The container market had a quiet week, with many countries celebrating the Lunar New Year, which affected activity levels, especially in the Far East. The lack of supply in the mid to larger segments also contributes to the reduced demand; however, the smaller feeders in Europe experienced a healthy week with plenty of interesting fixtures. Due to the reasons mentioned earlier, rates remain stable this week, with minimal to no change from the previous week. Overall New ConTex is up between 75-150% compared to the same time last year, underlining the strength of the current market, even if all indicators have pointed sideways recently. The index reflects the stabilized rates this week, down 0.6%, bringing it from 1429 to 1421 points, and we expect this small and steady increase to continue in the short term, perhaps until spring. The index is up 1.6% since last month, which comes as no surprise since December and January are historically 'slow' months for fixing. None of the segments saw a significant enough change worth mentioning; however, this might change with details emerging from fixtures concluded this week that may not yet be revealed—only time will tell. One noticeable development is the month-to-month change for 1,700 TEU, which is up 5.4% on the six-month rate and 4.2% on the twelve-month rate. We expect demand and activity to pick up next week, which may give us a better idea of the market.

New ConTex Development												
Vessel type	Evaluated Period	Today	Week-on-Week		Month-on-Month			Year-on-Year				
		30.01.25	23.01.25	Change	Change	19.12.24	Change	Change	01.02.24	Change	Change	
New ConTex*		1421	1429	-8	⇒ -0,6%	1398	23	↗ 1,6%	641	780	↑ 121,7%	
1100 TEU	6 mos	\$14.727	\$14.750	-\$23	⇒ -0,2%	\$14.832	-\$105	⇒ -0,7%	\$8.370	\$6.357	↑ 75,9%	
	12 mos	\$13.950	\$13.984	-\$34	⇒ -0,2%	\$14.002	-\$52	⇒ -0,4%	\$7.707	\$6.243	↑ 81,0%	
1700 TEU	6 mos	\$26.186	\$26.292	-\$106	⇒ -0,4%	\$24.841	\$1.345	↗ 5,4%	\$10.405	\$15.781	↑ 151,7%	
	12 mos	\$22.655	\$22.873	-\$218	⇒ -1,0%	\$21.736	\$919	↗ 4,2%	\$9.736	\$12.919	↑ 132,7%	
1800 TEU	6 mos	\$29.914	\$30.145	-\$231	⇒ -0,8%	\$29.436	\$478	↗ 1,6%	\$12.430	\$17.484	↑ 140,7%	
2500 TEU	12 mos	\$31.468	\$31.709	-\$241	⇒ -0,8%	\$30.727	\$741	↗ 2,4%	\$14.552	\$16.916	↑ 116,2%	
	24 mos	\$26.132	\$26.364	-\$232	⇒ -0,9%	\$25.795	\$337	↗ 1,3%	\$12.264	\$13.868	↑ 113,1%	
2700 TEU	12 mos	\$34.059	\$34.336	-\$277	⇒ -0,8%	\$33.395	\$664	↗ 2,0%	\$16.130	\$17.929	↑ 111,2%	
	24 mos	\$28.082	\$28.232	-\$150	⇒ -0,5%	\$27.900	\$182	↗ 0,7%	\$13.818	\$14.264	↑ 103,2%	
3500 TEU	12 mos	\$41.270	\$41.520	-\$250	⇒ -0,6%	\$41.050	\$220	↗ 0,5%	\$18.335	\$22.935	↑ 125,1%	
	24 mos	\$33.093	\$33.350	-\$257	⇒ -0,8%	\$33.530	-\$437	↘ -1,3%	\$16.020	\$17.073	↑ 106,6%	
4250 TEU	12 mos	\$52.980	\$53.135	-\$155	⇒ -0,3%	\$52.745	\$235	↗ 0,4%	\$21.235	\$31.745	↑ 149,5%	
	24 mos	\$41.065	\$41.025	\$40	⇒ 0,1%	\$41.600	-\$535	↘ -1,3%	\$18.320	\$22.745	↑ 124,2%	
5700 TEU	12 mos	\$60.972	\$60.850	\$122	⇒ 0,2%	\$60.444	\$528	↗ 0,9%	\$26.206	\$34.766	↑ 132,7%	
6500 TEU	12 mos	\$68.011	\$68.033	-\$22	⇒ 0,0%	\$67.489	\$522	↗ 0,8%	\$30.089	\$37.922	↑ 126,0%	



Disclaimer

The brand NewConTex is copyrighted by Verband Hamburger und Bremer Schiffsmakler e.V. ("VHBS e.V.") and is protected by law. The NewConTex may be published only with the source reference © VHBS e.V. It is distributed to the general public for information purposes only and cannot be relied upon as a trading recommendation and does not constitute a solicitation to trade. The reported information is obtained from market sources. While every effort has been made to ensure the accuracy and the completeness of the NewConTex, VHBS e.V. makes no representations, conditions or warranties of any kind, express or implied, about the completeness, accuracy, reliability, or suitability of the NewConTex. Any reliance you place on the NewConTex is therefore strictly at your own risk. Neither VHBS e.V. nor any of its subsidiaries or affiliates nor any employee of the foregoing shall be liable or have any responsibility for any loss, liability or damage, cost or expense including without limitation, indirect or consequential loss or damage, or any loss or damage whatsoever arising from loss of data or profits arising out of, or in connection with, the use of and the reliance on the NewConTex, save for death or personal injury arising from VHBS e.V. negligence and fraudulent misrepresentation that cannot, under German law, be excluded.