



Verband Hamburger  
und Bremer  
Schiffsmakler e.V.

## New ConTex Container Ship Time Charter Assessment Index

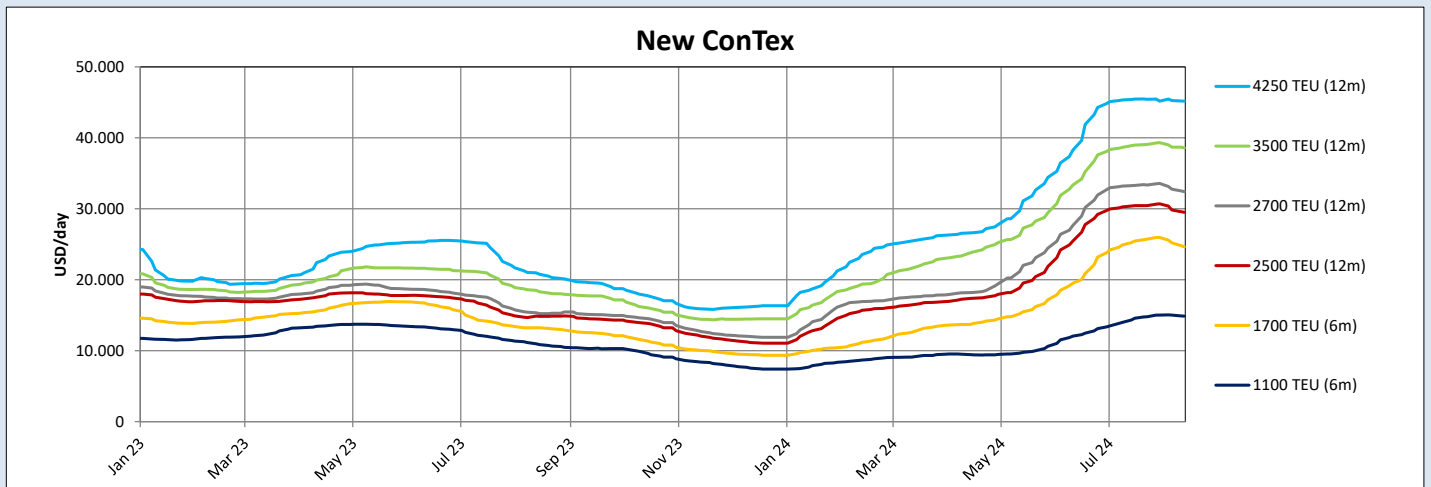
New ConTex*		1325	
15.08.24		6 mos	12 mos
Geared	1100 TEU	\$14.882	n.a.
	1700 TEU	\$24.650	
	2500 TEU	\$29.505	
Gearless	2700 TEU	n.a.	\$32.409
	3500 TEU		\$38.600
	4250 TEU		\$45.160

Legend		
↑	up	+ 2% or more
↗	steady up	from +1% to +1,9%
→	steady	+/- 1%
↘	steady down	from -1% to -1,9%
↓	down	- 2% or less

\*New ConTex evaluation is EXCLUDING 1800 TEU for 6 months period, 1100/1700/5700/6500 TEU groups for 12 months period & 2500/2700/3500/4250 TEU groups for 24 months period

New ConTex-Commentary - issued:		15.08.24
<p>With the summer in full swing and holidays in various countries, this week did not create any excitement neither in activity or rate levels. In fact, looking at the New ConTex Index, whilst the index itself was rather stagnating at a reduction of 0,9%, the usually very active sizes of 1700 and 2500 TEU actually saw reductions in their Index levels. We do however find ourselves in a bit of a predicament, as due to the lack of actual fixture activity, it is hard to judge how substantial the actual downward pressure of rates is or whether we simply are being taken in by an overblown negative sentiment based on the lack of aforementioned activity. That being said, what can definitely be observed is a reduction in periods fixed. Whilst this commentator has already concluded his way to short holidays, the holiday effects will be with us for another few weeks and then mist should clear and we will see where we really are. Given however that the fundamentals that led us to the unexpected surge in rates have not changed considerably, a substantial reduction of rate levels does not seem to be on the cards for the remainder of the year. We do expect however further pressure on periods. So enjoy the rest of the holidays, keep the drinks cool and use sunscreen...</p>		

New ConTex Development											
Vessel type	Evaluated Period	Today	Week-on-Week		Month-on-Month		Year-on-Year				
		15.08.24	08.08.24	Change	Change	18.07.24	Change	Change	17.08.23	Change	Change
<b>New ConTex*</b>		<b>1325</b>	1337	-12	⇒ -0,9%	1345	-20	⇒ -1,5%	687	638	↑ 92,9%
1100 TEU	6 mos	\$14.882	\$15.025	-\$143	⇒ -1,0%	\$14.589	\$293	↑ 2,0%	\$10.868	\$4.014	↑ 36,9%
	12 mos	\$13.761	\$13.841	-\$80	⇒ -0,6%	\$13.291	\$470	↑ 3,5%	\$10.395	\$3.366	↑ 32,4%
1700 TEU	6 mos	\$24.650	\$25.191	-\$541	↓ -2,1%	\$25.450	-\$800	↓ -3,1%	\$13.220	\$11.430	↑ 86,5%
	12 mos	\$20.909	\$21.409	-\$500	↓ -2,3%	\$21.783	-\$874	↓ -4,0%	\$12.443	\$8.466	↑ 68,0%
1800 TEU	6 mos	\$30.273	\$31.273	-\$1.000	↓ -3,2%	\$32.059	-\$1.786	↓ -5,6%	-	-	-
2500 TEU	12 mos	\$29.505	\$29.823	-\$318	⇒ -1,1%	\$30.432	-\$927	↓ -3,0%	\$14.855	\$14.650	↑ 98,6%
	24 mos	\$24.173	\$24.468	-\$295	⇒ -1,2%	\$25.055	-\$882	↓ -3,5%	\$13.589	\$10.584	↑ 77,9%
2700 TEU	12 mos	\$32.409	\$32.755	-\$346	⇒ -1,1%	\$33.277	-\$868	↓ -2,6%	\$15.235	\$17.174	↑ 112,7%
	24 mos	\$26.723	\$26.964	-\$241	⇒ -0,9%	\$27.086	-\$363	⇒ -1,3%	\$14.203	\$12.520	↑ 88,2%
3500 TEU	12 mos	\$38.600	\$38.695	-\$95	⇒ -0,2%	\$38.970	-\$370	⇒ -0,9%	\$18.315	\$20.285	↑ 110,8%
	24 mos	\$32.875	\$33.030	-\$155	⇒ -0,5%	\$33.385	-\$510	⇒ -1,5%	\$16.640	\$16.235	↑ 97,6%
4250 TEU	12 mos	\$45.160	\$45.260	-\$100	⇒ -0,2%	\$45.475	-\$315	⇒ -0,7%	\$20.755	\$24.405	↑ 117,6%
	24 mos	\$36.975	\$36.205	\$770	↑ 2,1%	\$37.275	-\$300	⇒ -0,8%	\$18.756	\$18.219	↑ 97,1%
5700 TEU	12 mos	\$56.783	\$56.833	-\$50	⇒ -0,1%	\$57.578	-\$795	⇒ -1,4%	\$31.639	\$25.144	↑ 79,5%
6500 TEU	12 mos	\$63.622	\$63.778	-\$156	⇒ -0,2%	\$65.756	-\$2.134	↓ -3,2%	\$34.439	\$29.183	↑ 84,7%



Disclaimer

The brand NewConTex is copyrighted by Verband Hamburger und Bremer Schiffsmakler e.V. ("VHBS e.V.") and is protected by law. The NewConTex may be published only with the source reference © VHBS e.V. It is distributed to the general public for information purposes only and cannot be relied upon as a trading recommendation and does not constitute a solicitation to trade. The reported information is obtained from market sources. While every effort has been made to ensure the accuracy and the completeness of the NewConTex, VHBS e.V. makes no representations, conditions or warranties of any kind, express or implied, about the completeness, accuracy, reliability, or suitability of the NewConTex. Any reliance you place on the NewConTex is therefore strictly at your own risk. Neither VHBS e.V. nor any of its subsidiaries or affiliates nor any employee of the foregoing shall be liable or have any responsibility for any loss, liability or damage, cost or expense including without limitation, indirect or consequential loss or damage, or any loss or damage whatsoever arising from loss of data or profits arising out of, or in connection with, the use of and the reliance on the NewConTex, save for death or personal injury arising from VHBS e.V. negligence and fraudulent misrepresentation that cannot, under German law, be excluded.