



Verband Hamburger
und Bremer
Schiffsmakler e.V.

New ConTex Container Ship Time Charter Assessment Index

New ConTex*		1345	
18.07.24		6 mos	12 mos
Geared	1100 TEU	\$14.589	n.a.
	1700 TEU	\$25.450	
	2500 TEU	\$30.432	
Gearless	2700 TEU	n.a.	\$33.277
	3500 TEU		\$38.970
	4250 TEU		\$45.475

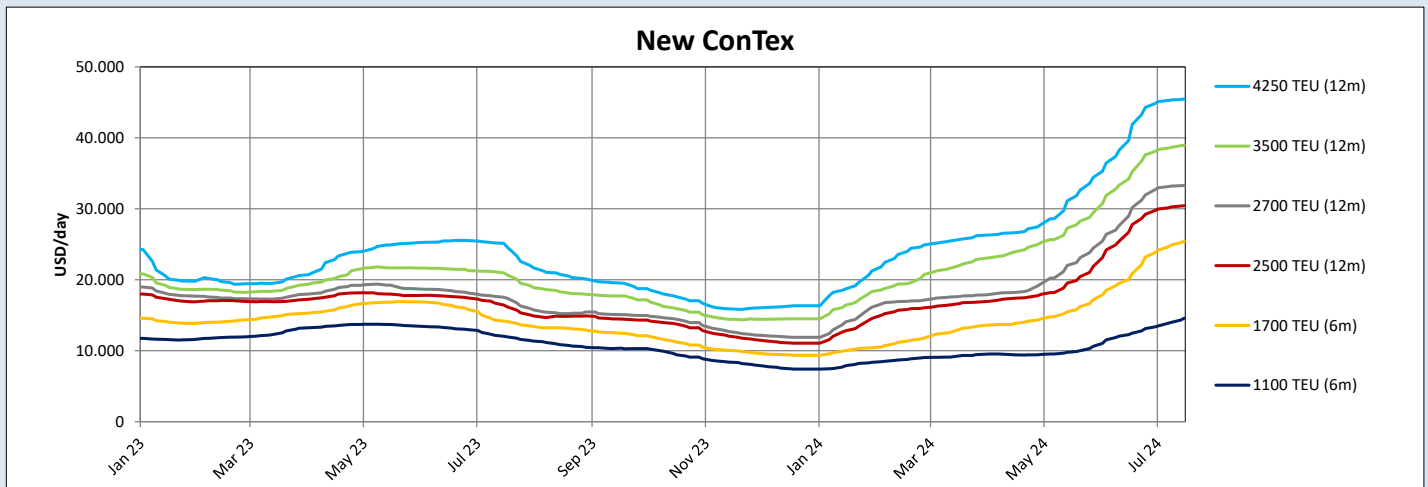
Legend		
↑	up	+ 2% or more
↗	steady up	from +1% to +1,9%
→	steady	+/- 1%
↘	steady down	from -1% to -1,9%
↓	down	- 2% or less

*New ConTex evaluation is EXCLUDING 1800 TEU for 6 months period, 1100/1700/5700/6500 TEU groups for 12 months period & 2500/2700/3500/4250 TEU groups for 24 months period

New ConTex-Commentary - issued: 18.07.24

Over the past two to three months charterers worldwide have rushed to secure tonnage from the market and forward fixed into next year pushing up hire rates. A summer lull or a plateau has formed in the past few weeks however. Futures almost halved with news of a, now seemingly defunct, Gaza peace deal and have not recovered since. Consequently charterer's appetites for premium rates beyond this year suddenly evaporated, especially in the larger the sizes. That said, New ConTex continues it's steady rise, summer peak season spot freight rates have surged and charterers still have urgent requirements to cover before midsummer whilst tonnage remains extremely sparse. Loosing tonnage to poaching competitors is still a very real and anxiety inducing possibility, port disruption and congestion is getting worse not better, with some sources claiming at least an additional 2-4% of total TEU capacity has been tied up directly as a result in the past month when compared to February of this year. Container ships returning en masse to and through the Red Sea, seems highly improbable any time soon, even if the area were deemed safe today. So how long the pervasive "wait and see" approach being deployed by MLOs can last is the big question to ponder as we start the summer break.

New ConTex Development											
Vessel type	Evaluated Period	Today	Week-on-Week		Month-on-Month			Year-on-Year			
		18.07.24	11.07.24	Change	Change	20.06.24	Change	Change	20.07.23	Change	Change
New ConTex*		1345	1329	16 ↗	1,2%	1196	149 ↗	12,5%	767	578 ↗	75,4%
1100 TEU	6 mos	\$14.589	\$13.995	\$594 ↗	4,2%	\$12.466	\$2.123 ↗	17,0%	\$11.940	\$2.649 ↗	22,2%
	12 mos	\$13.291	\$12.740	\$551 ↗	4,3%	\$11.568	\$1.723 ↗	14,9%	\$11.342	\$1.949 ↗	17,2%
1700 TEU	6 mos	\$25.450	\$24.890	\$560 ↗	2,2%	\$20.855	\$4.595 ↗	22,0%	\$14.104	\$11.346 ↗	80,4%
	12 mos	\$21.783	\$21.135	\$648 ↗	3,1%	\$18.909	\$2.874 ↗	15,2%	\$13.500	\$8.283 ↗	61,4%
1800 TEU	6 mos	\$32.059	\$31.540	\$519 ↗	1,6%	\$27.100	\$4.959 ↗	18,3%	-	-	-
2500 TEU	12 mos	\$30.432	\$30.270	\$162 ↗	0,5%	\$27.786	\$2.646 ↗	9,5%	\$16.166	\$14.266 ↗	88,2%
	24 mos	\$25.055	\$24.850	\$205 ↗	0,8%	\$23.236	\$1.819 ↗	7,8%	\$14.859	\$10.196 ↗	68,6%
2700 TEU	12 mos	\$33.277	\$33.195	\$82 ↗	0,2%	\$30.177	\$3.100 ↗	10,3%	\$17.355	\$15.922 ↗	91,7%
	24 mos	\$27.086	\$26.905	\$181 ↗	0,7%	\$24.636	\$2.450 ↗	9,9%	\$15.855	\$11.231 ↗	70,8%
3500 TEU	12 mos	\$38.970	\$38.644	\$326 ↗	0,8%	\$35.230	\$3.740 ↗	10,6%	\$20.648	\$18.322 ↗	88,7%
	24 mos	\$33.385	\$33.250	\$135 ↗	0,4%	\$30.920	\$2.465 ↗	8,0%	\$18.798	\$14.587 ↗	77,6%
4250 TEU	12 mos	\$45.475	\$45.339	\$136 ↗	0,3%	\$41.890	\$3.585 ↗	8,6%	\$24.558	\$20.917 ↗	85,2%
	24 mos	\$37.275	\$37.178	\$97 ↗	0,3%	\$34.190	\$3.085 ↗	9,0%	\$22.665	\$14.610 ↗	64,5%
5700 TEU	12 mos	\$57.578	\$56.944	\$634 ↗	1,1%	\$50.044	\$7.534 ↗	15,1%	\$31.847	\$25.731 ↗	80,8%
6500 TEU	12 mos	\$65.756	\$65.156	\$600 ↗	0,9%	\$58.056	\$7.700 ↗	13,3%	\$34.994	\$30.762 ↗	87,9%



Disclaimer

The brand NewConTex is copyrighted by Verband Hamburger und Bremer Schiffsmakler e.V. ("VHBS e.V.") and is protected by law. The NewConTex may be published only with the source reference © VHBS e.V. It is distributed to the general public for information purposes only and cannot be relied upon as a trading recommendation and does not constitute a solicitation to trade. The reported information is obtained from market sources. While every effort has been made to ensure the accuracy and the completeness of the NewConTex, VHBS e.V. makes no representations, conditions or warranties of any kind, express or implied, about the completeness, accuracy, reliability, or suitability of the NewConTex. Any reliance you place on the NewConTex is therefore strictly at your own risk. Neither VHBS e.V. nor any of its subsidiaries or affiliates nor any employee of the foregoing shall be liable or have any responsibility for any loss, liability or damage, cost or expense including without limitation, indirect or consequential loss or damage, or any loss or damage whatsoever arising from loss of data or profits arising out of, or in connection with, the use of and the reliance on the NewConTex, save for death or personal injury arising from VHBS e.V. negligence and fraudulent misrepresentation that cannot, under German law, be excluded.