



Verband Hamburger
und Bremer
Schiffsmakler e.V.

New ConTex Container Ship Time Charter Assessment Index

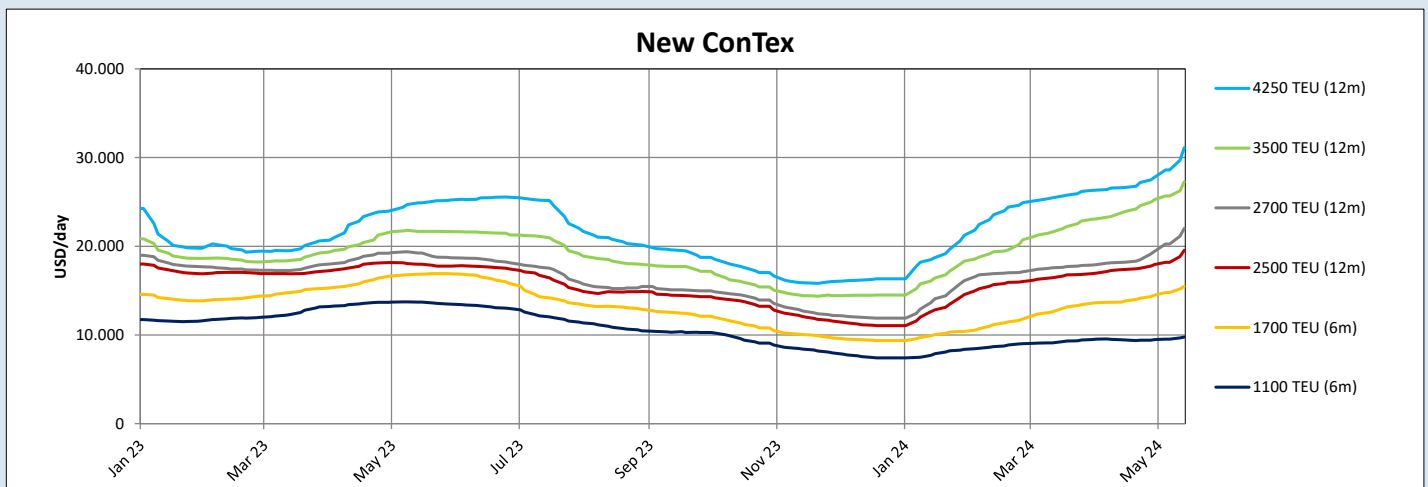
New ConTex*		891	
16.05.24		6 mos	12 mos
Geared	1100 TEU	\$9.757	n.a.
	1700 TEU	\$15.498	
	2500 TEU	\$19.536	
Gearless	2700 TEU	n.a.	\$22.016
	3500 TEU		\$27.270
	4250 TEU		\$31.115

Legend		
↑	up	+ 2% or more
↗	steady up	from +1% to +1,9%
→	steady	+/- 1%
↘	steady down	from -1% to -1,9%
↓	down	- 2% or less

*New ConTex evaluation is EXCLUDING 1800 TEU for 6 months period, 1100/1700/5700/6500 TEU groups for 12 months period & 2500/2700/3500/4250 TEU groups for 24 months period

New ConTex-Commentary - issued:		16.05.24
<p>A sunny week with summer temperatures is coming to some end and still the rates see a very positive trend in every segment.</p> <p>The New ConTex increased 29 points still pushed by the larger segments 3500 teu and 4250 teu but also the segment of 2700 Teu participate as well. The week-on-week shows an increase of USD 2505 - 4250 teu / USD 1595 - 3500 teu / USD 1359 - 2500 teu based on 12 months valuation. When looking at the year-on-year para the most positive trend has been seen on the 3500 TEU segment with an improvement of 25,8% (last week: 17,7%) and 4250 teu went up 24,9 pct (last week 15,8%). This being said the smaller segment (1100 teu/1700 teu) remain this week on the year-on-year comparison negative but we see here as well a positive trend: 12 pct up on month-on-month 6 months valuation for 1700 teu respectively 3,5% pct up for 1100 teu / 6 months.</p> <p>In general the demand for container tonnage and limited tonnage supply has been noted on the MPP side as well and some operators start checking interest in this segment again. With the unchanged not solved red sea scenario, panama canal not being back to normal "tomorrow" and the general positive trend it will be interesting to see if we going to see again a boom like we have seen during corona times.</p>		

New ConTex Development											
Vessel type	Evaluated Period	Today	Week-on-Week		Month-on-Month			Year-on-Year			
		16.05.24	09.05.24	Change	Change	18.04.24	Change	Change	18.05.23	Change	Change
New ConTex*		891	835	56	↑ 6,7%	784	107	↑ 13,6%	846	45	↑ 5,3%
1100 TEU	6 mos	\$9.757	\$9.523	\$234	↑ 2,5%	\$9.430	\$327	↑ 3,5%	\$13.694	-\$3.937	↓ -28,7%
	12 mos	\$9.105	\$8.777	\$328	↑ 3,7%	\$8.730	\$375	↑ 4,3%	\$13.090	-\$3.985	↓ -30,4%
1700 TEU	6 mos	\$15.498	\$14.780	\$718	↑ 4,9%	\$13.834	\$1.664	↑ 12,0%	\$16.838	-\$1.340	↓ -8,0%
	12 mos	\$14.677	\$13.991	\$686	↑ 4,9%	\$13.009	\$1.668	↑ 12,8%	\$16.129	-\$1.452	↓ -9,0%
1800 TEU	6 mos	\$17.048	\$16.411	\$637	↑ 3,9%	\$15.841	\$1.207	↑ 7,6%	-	-	-
2500 TEU	12 mos	\$19.536	\$18.177	\$1.359	↑ 7,5%	\$17.398	\$2.138	↑ 12,3%	\$17.977	\$1.559	↑ 8,7%
	24 mos	\$17.102	\$16.134	\$968	↑ 6,0%	\$15.114	\$1.988	↑ 13,2%	\$16.516	\$586	↑ 3,5%
2700 TEU	12 mos	\$22.016	\$20.239	\$1.777	↑ 8,8%	\$18.218	\$3.798	↑ 20,8%	\$19.241	\$2.775	↑ 14,4%
	24 mos	\$18.723	\$17.614	\$1.109	↑ 6,3%	\$15.959	\$2.764	↑ 17,3%	\$17.527	\$1.196	↑ 6,8%
3500 TEU	12 mos	\$27.270	\$25.675	\$1.595	↑ 6,2%	\$23.940	\$3.330	↑ 13,9%	\$21.680	\$5.590	↑ 25,8%
	24 mos	\$23.368	\$21.710	\$1.658	↑ 7,6%	\$20.000	\$3.368	↑ 16,8%	\$19.948	\$3.420	↑ 17,1%
4250 TEU	12 mos	\$31.115	\$28.610	\$2.505	↑ 8,8%	\$26.643	\$4.472	↑ 16,8%	\$24.905	\$6.210	↑ 24,9%
	24 mos	\$28.400	\$25.093	\$3.307	↑ 13,2%	\$22.900	\$5.500	↑ 24,0%	\$23.105	\$5.295	↑ 22,9%
5700 TEU	12 mos	\$37.700	\$36.711	\$989	↑ 2,7%	\$34.450	\$3.250	↑ 9,4%	\$31.850	\$5.850	↑ 18,4%
6500 TEU	12 mos	\$44.422	\$43.567	\$855	↔ 2,0%	\$41.433	\$2.989	↑ 7,2%	\$36.678	\$7.744	↑ 21,1%



Disclaimer

The brand NewConTex is copyrighted by Verband Hamburger und Bremer Schiffsmakler e.V. ("VHBS e.V.") and is protected by law. The NewConTex may be published only with the source reference © VHBS e.V. It is distributed to the general public for information purposes only and cannot be relied upon as a trading recommendation and does not constitute a solicitation to trade. The reported information is obtained from market sources. While every effort has been made to ensure the accuracy and the completeness of the NewConTex, VHBS e.V. makes no representations, conditions or warranties of any kind, express or implied, about the completeness, accuracy, reliability, or suitability of the NewConTex. Any reliance you place on the NewConTex is therefore strictly at your own risk. Neither VHBS e.V. nor any of its subsidiaries or affiliates nor any employee of the foregoing shall be liable or have any responsibility for any loss, liability or damage, cost or expense including without limitation, indirect or consequential loss or damage, or any loss or damage whatsoever arising from loss of data or profits arising out of, or in connection with, the use of and the reliance on the NewConTex, save for death or personal injury arising from VHBS e.V. negligence and fraudulent misrepresentation that cannot, under German law, be excluded.