

New ConTex Container Ship Time Charter Assessment Index

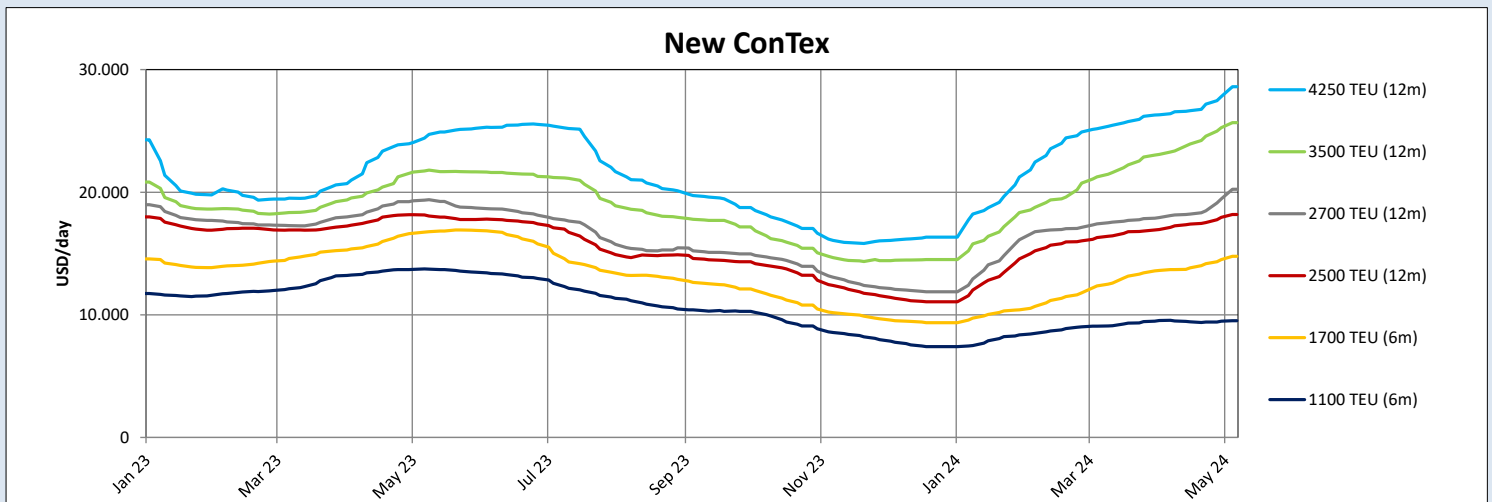
New ConTex*		835	
09.05.24		6 mos	12 mos
Geared	1100 TEU	\$9.523	n.a.
	1700 TEU	\$14.780	
	2500 TEU		\$18.177
Gearless	2700 TEU	n.a.	\$20.239
	3500 TEU		\$25.675
	4250 TEU		\$28.610

Legend		
↑	up	+ 2% or more
↗	steady up	from +1% to +1,9%
→	steady	+/- 1%
↘	steady down	from -1% to -1,9%
↓	down	- 2% or less

*New ConTex evaluation is EXCLUDING 1800 TEU for 6 months period, 1100/1700/5700/6500 TEU groups for 12 months period & 2500/2700/3500/4250 TEU groups for 24 months period

New ConTex-Commentary - issued:	09.05.24
<p>The New ConTex increased 17 points as 2700s and 4250s increased about USD 787pd and USD 800pd for 12 months respectively, although these do not truly reflect the extent to which the market is firming above 2000 TEU. Significant premiums for short periods are on their way back as one panamax fixed for 45-60 days at around USD 46,000pd, while Maersk had to pay mid USD 27's on a baby-panamax for 20-24 months, and the 4250 ConTex for 2 years shot up by USD 1160pd. 2700s arguably firmed the most as Maersk and Hede Shipping fixed ships for two years at USD 18,000pd, the same level the market was at two weeks ago but for twice the period, so we expect to see the ConTex head towards this level next week. The ConTex for modern-eco 1800s has climbed to about USD 18,000pd for 12 months, although this is likely heavily influenced by perception of the market in the Atlantic, since there are ships in Asia which will still fix USD 16,000-17,000pd for this period. Although the ConTex for 1100s only increased by USD 40-50pd, there is plenty of demand at the moment in Asia and rates are now on their way up. In Europe there are still enough small feeders available to keep the rates stable for the time being, even if sentiment is influenced by the firming market in the larger sizes.</p>	

New ConTex Development														
Vessel type	Evaluated Period	Today	Week-on-Week		Month-on-Month			Year-on-Year						
		09.05.24	02.05.24	Change	Change	11.04.24	Change	Change	11.05.23	Change	Change			
New ConTex*		835	818	17	↑	2,1%	778	57	↑	7,3%	847	-12	↘	-1,4%
1100 TEU	6 mos	\$9.523	\$9.475	\$48	↗	0,5%	\$9.498	\$25	↗	0,3%	\$13.723	-\$4.200	↓	-30,6%
	12 mos	\$8.777	\$8.736	\$41	↗	0,5%	\$8.793	-\$16	↗	-0,2%	\$13.094	-\$4.317	↓	-33,0%
1700 TEU	6 mos	\$14.780	\$14.498	\$282	↗	1,9%	\$13.685	\$1.095	↑	8,0%	\$16.785	-\$2.005	↓	-11,9%
	12 mos	\$13.991	\$13.736	\$255	↗	1,9%	\$12.836	\$1.155	↑	9,0%	\$16.096	-\$2.105	↓	-13,1%
1800 TEU	6 mos	\$16.411	\$16.293	\$118	↗	0,7%	\$15.773	\$638	↑	4,0%	-	-	-	-
2500 TEU	12 mos	\$18.177	\$17.959	\$218	↗	1,2%	\$17.259	\$918	↑	5,3%	\$18.050	\$127	↗	0,7%
	24 mos	\$16.134	\$15.625	\$509	↑	3,3%	\$14.980	\$1.154	↑	7,7%	\$16.570	-\$436	↓	-2,6%
2700 TEU	12 mos	\$20.239	\$19.452	\$787	↑	4,0%	\$18.148	\$2.091	↑	11,5%	\$19.384	\$855	↑	4,4%
	24 mos	\$17.614	\$17.000	\$614	↑	3,6%	\$15.866	\$1.748	↑	11,0%	\$17.584	\$30	↗	0,2%
3500 TEU	12 mos	\$25.675	\$25.265	\$410	↗	1,6%	\$23.358	\$2.317	↑	9,9%	\$21.810	\$3.865	↑	17,7%
	24 mos	\$21.710	\$21.045	\$665	↑	3,2%	\$19.813	\$1.897	↑	9,6%	\$20.033	\$1.677	↑	8,4%
4250 TEU	12 mos	\$28.610	\$27.810	\$800	↑	2,9%	\$26.555	\$2.055	↑	7,7%	\$24.708	\$3.902	↑	15,8%
	24 mos	\$25.093	\$23.933	\$1.160	↑	4,8%	\$22.773	\$2.320	↑	10,2%	\$22.940	\$2.153	↑	9,4%
5700 TEU	12 mos	\$36.711	\$35.767	\$944	↑	2,6%	\$34.411	\$2.300	↑	6,7%	\$31.594	\$5.117	↑	16,2%
6500 TEU	12 mos	\$43.567	\$43.067	\$500	↗	1,2%	\$41.283	\$2.284	↑	5,5%	\$36.450	\$7.117	↑	19,5%



Disclaimer

The brand NewConTex is copyrighted by Verband Hamburger und Bremer Schiffsmakler e.V. ("VHBS e.V.") and is protected by law. The NewConTex may be published only with the source reference © VHBS e.V. It is distributed to the general public for information purposes only and cannot be relied upon as a trading recommendation and does not constitute a solicitation to trade. The reported information is obtained from market sources. While every effort has been made to ensure the accuracy and the completeness of the NewConTex, VHBS e.V. makes no representations, conditions or warranties of any kind, express or implied, about the completeness, accuracy, reliability, or suitability of the NewConTex. Any reliance you place on the NewConTex is therefore strictly at your own risk. Neither VHBS e.V. nor any of its subsidiaries or affiliates nor any employee of the foregoing shall be liable or have any responsibility for any loss, liability or damage, cost or expense including without limitation, indirect or consequential loss or damage, or any loss or damage whatsoever arising from loss of data or profits arising out of, or in connection with, the use of and the reliance on the NewConTex, save for death or personal injury arising from VHBS e.V. negligence and fraudulent misrepresentation that cannot, under German law, be excluded.