



Verband Hamburger
und Bremer
Schiffsmakler e.V.

New ConTex Container Ship Time Charter Assessment Index

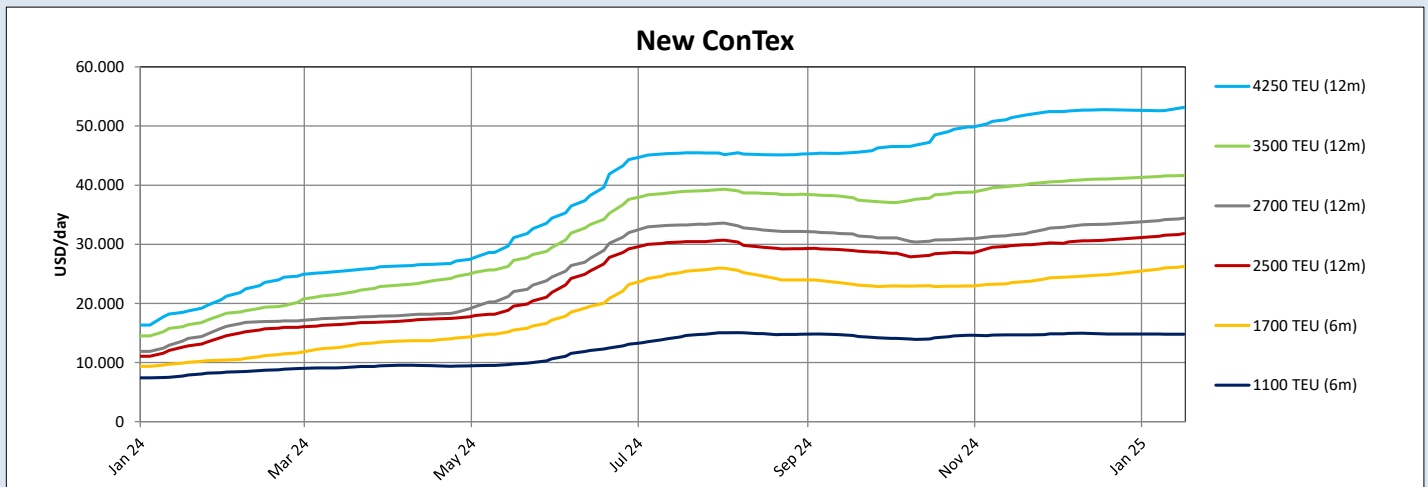
New ConTex*		1430	
16.01.25		6 mos	12 mos
Geared	1100 TEU	\$14.770	n.a.
	1700 TEU	\$26.250	
	2500 TEU	\$31.805	
Gearless	2700 TEU	n.a.	\$34.418
	3500 TEU		\$41.625
	4250 TEU		\$53.135

Legend		
↑	up	+ 2% or more
↗	steady up	from +1% to +1,9%
→	steady	+/- 1 %
↘	steady down	from -1% to -1,9%
↓	down	- 2% or less

*New ConTex evaluation is EXCLUDING 1800 TEU for 6 months period, 1100/1700/5700/6500 TEU groups for 12 months period & 2500/2700/3500/4250 TEU groups for 24 months period

New ConTex-Commentary - issued:		16.01.25
<p>The second full working week of the year reveals no surprises. Activity is still not back in full swing, although picking up noticeably. Although all size segments find their takers, the figures for the 1100 TEUs stagnate with a marginal negative tendency only (-0.2/-0.1%). Larger vessels are being fixed easier, if they then were available. Although the proportional week-on-week increases of the New ConTex appear very little in all size and duration segments (between 0 and 1% only) actual rate figures going up by upto USD 500, eg. for Panamax 12-months fixtures.</p> <p>The New ConTex currently stands at 1430 points - a gain of only 0.6% against last week - but 1.5-fold of the figure a year ago. The outlook for the near future doesn't look dampened, however with the cease fire coming up in Gaza, the Red Sea situation should also calm down. It is to be seen how quickly this will have effect on the shipping markets.</p>		

New ConTex Development											
Vessel type	Evaluated Period	Today	Week-on-Week		Month-on-Month		Year-on-Year				
		16.01.25	09.01.25	Change	Change	19.12.24	Change	Change	18.01.24	Change	Change
New ConTex*		1430	1422	8	0,6%	1398	32	2,3%	578	852	147,4%
1100 TEU	6 mos	\$14.770	\$14.800	-\$30	-0,2%	\$14.832	-\$62	-0,4%	\$7.888	\$6.882	87,2%
	12 mos	\$14.034	\$14.055	-\$21	-0,1%	\$14.002	\$32	0,2%	\$7.296	\$6.738	92,4%
1700 TEU	6 mos	\$26.250	\$26.005	\$245	0,9%	\$24.841	\$1.409	5,7%	\$10.033	\$16.217	161,6%
	12 mos	\$22.641	\$22.514	\$127	0,6%	\$21.736	\$905	4,2%	\$9.396	\$13.245	141,0%
1800 TEU	6 mos	\$30.105	\$29.836	\$269	0,9%	\$29.436	\$669	2,3%	\$11.427	\$18.678	163,5%
	12 mos	\$31.805	\$31.536	\$269	0,9%	\$30.727	\$1.078	3,5%	\$12.825	\$18.980	148,0%
2500 TEU	24 mos	\$26.527	\$26.318	\$209	0,8%	\$25.795	\$732	2,8%	\$11.082	\$15.445	139,4%
	12 mos	\$34.418	\$34.186	\$232	0,7%	\$33.395	\$1.023	3,1%	\$14.084	\$20.334	144,4%
2700 TEU	24 mos	\$28.300	\$28.086	\$214	0,8%	\$27.900	\$400	1,4%	\$12.173	\$16.127	132,5%
	12 mos	\$41.625	\$41.580	\$45	0,1%	\$41.050	\$575	1,4%	\$16.415	\$25.210	153,6%
3500 TEU	24 mos	\$33.425	\$33.430	-\$5	0,0%	\$33.530	-\$105	-0,3%	\$14.420	\$19.005	131,8%
	12 mos	\$53.135	\$52.615	\$520	1,0%	\$52.745	\$390	0,7%	\$18.725	\$34.410	183,8%
4250 TEU	24 mos	\$41.365	\$41.156	\$209	0,5%	\$41.600	-\$235	-0,6%	\$16.390	\$24.975	152,4%
	12 mos	\$60.528	\$60.461	\$67	0,1%	\$60.444	\$84	0,1%	\$23.844	\$36.684	153,9%
6500 TEU	12 mos	\$67.706	\$67.622	\$84	0,1%	\$67.489	\$217	0,3%	\$26.128	\$41.578	159,1%



Disclaimer

The brand NewConTex is copyrighted by Verband Hamburger und Bremer Schiffsmakler e.V. ("VHBS e.V.") and is protected by law. The NewConTex may be published only with the source reference © VHBS e.V. It is distributed to the general public for information purposes only and cannot be relied upon as a trading recommendation and does not constitute a solicitation to trade. The reported information is obtained from market sources. While every effort has been made to ensure the accuracy and the completeness of the NewConTex, VHBS e.V. makes no representations, conditions or warranties of any kind, express or implied, about the completeness, accuracy, reliability, or suitability of the NewConTex. Any reliance you place on the NewConTex is therefore strictly at your own risk. Neither VHBS e.V. nor any of its subsidiaries or affiliates nor any employee of the foregoing shall be liable or have any responsibility for any loss, liability or damage, cost or expense including without limitation, indirect or consequential loss or damage, or any loss or damage whatsoever arising from loss of data or profits arising out of, or in connection with, the use of and the reliance on the NewConTex, save for death or personal injury arising from VHBS e.V. negligence and fraudulent misrepresentation that cannot, under German law, be excluded.