

New ConTex Container Ship Time Charter Assessment Index

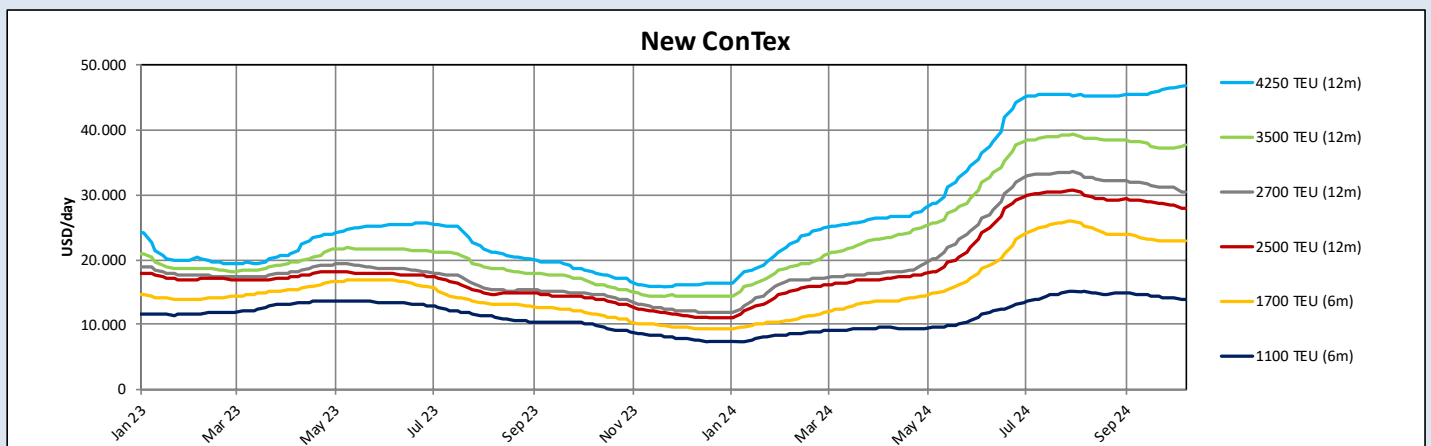
New ConTex*		1275	
	10.10.24	6 mos	12 mos
Geared	1100 TEU	\$13.916	n.a.
	1700 TEU	\$22.964	
	2500 TEU		\$27.932
Gearless	2700 TEU	n.a.	\$30.359
	3500 TEU		\$37.620
	4250 TEU		\$46.780

Legend		
↑	up	+2% or more
↗	steady up	from +1% to +1.9%
↔	steady	+/- 1%
↘	steady down	from -1% to -1.9%
↓	down	-2% or less

*New ConTex evaluation is EXCLUDING 1800 TEU for 6 months period, 1100/1700/2700/3500/4250 TEU groups for 12 months period & 2500/2700/3500/4250 TEU groups for 24 months period

New ConTex-Commentary - issued:		10.10.24
<p>The good news is that the short-lived US ports strike has had very little impact on the chartering market and the possible chaos has been avoided. The New ConTex has lost again only 6 points or only 0.5 pct on a week-on-week basis. However, the charter market remains healthy across the board and is now stabilized. With still a high demand for most sizes of vessels, charter rates continue to evolve at high level compared to last year (+105 pct) and although they remain globally stable, some sizes are seeing slightly weaker conditions, particularly the smaller vessels. In all cases, the charter rates continue to evolve at odds with freight rates which keep falling at an accelerated pace. The Shanghai Containerized Freight Index (SCFI) is on a downward trend with many trades, particularly Asia-North Europe, Asia-Med and Asia-USEC seeing double digit drops this has so far not yet been reflected in the charter market.</p>		

New ConTex Development											
Vessel type	Evaluated Period	Today		Week-on-Week		Month-on-Month			Year-on-Year		
		10.10.24	03.10.24	Change	Change	12.09.24	Change	Change	12.10.23	Change	Change
New ConTex*		1275	1281	-6	-0.5%	1303	-28	-2.1%	622	653	105.0%
1100 TEU	6 mos	\$13.916	\$14.089	-\$173	-1.2%	\$14.707	-\$791	-5.4%	\$9.914	\$4.002	40.4%
	12 mos	\$13.036	\$13.195	-\$159	-1.2%	\$13.686	-\$650	-4.7%	\$9.305	\$3.731	40.1%
1700 TEU	6 mos	\$22.964	\$22.959	\$5	0.0%	\$23.507	-\$543	-2.3%	\$11.593	\$11.371	98.1%
	12 mos	\$19.698	\$19.525	\$173	0.9%	\$20.093	-\$395	-2.0%	\$11.027	\$8.671	78.6%
1800 TEU	6 mos	\$26.745	\$27.150	-\$405	-1.5%	\$28.923	-\$2.178	-7.5%	\$12.691	\$14.054	110.7%
2500 TEU	12 mos	\$27.932	\$28.473	-\$541	-1.9%	\$29.098	-\$1.166	-4.0%	\$13.975	\$13.957	99.9%
	24 mos	\$24.400	\$24.264	\$136	0.6%	\$24.327	\$73	0.3%	\$12.823	\$11.577	90.3%
2700 TEU	12 mos	\$30.359	\$31.091	-\$732	-2.4%	\$31.805	-\$1.446	-4.5%	\$14.652	\$15.707	107.2%
	24 mos	\$25.980	\$26.007	-\$27	-0.1%	\$26.343	-\$363	-1.4%	\$13.532	\$12.448	92.0%
3500 TEU	12 mos	\$37.620	\$37.075	\$545	1.5%	\$38.150	-\$530	-1.4%	\$16.208	\$21.412	132.1%
	24 mos	\$30.535	\$30.380	\$155	0.5%	\$32.390	-\$1.855	-5.7%	\$14.685	\$15.850	107.9%
4250 TEU	12 mos	\$46.780	\$46.525	\$255	0.5%	\$45.370	\$1.410	3.1%	\$17.990	\$28.790	160.0%
	24 mos	\$37.865	\$38.320	-\$455	-1.2%	\$37.055	\$810	2.2%	\$16.315	\$21.550	132.1%
5700 TEU	12 mos	\$57.583	\$57.239	\$344	0.6%	\$56.650	\$933	1.6%	\$26.425	\$31.158	117.9%
6500 TEU	12 mos	\$64.678	\$64.667	\$11	0.0%	\$63.539	\$1.139	1.8%	\$29.711	\$34.967	117.7%



Disclaimer

The brand NewConTex is copyrighted by Verband Hamburger und Bremer Schiffsmakler e.V. ("VHBS e.V.") and is protected by law. The NewConTex may be published only with the source reference © VHBS e.V. It is distributed to the general public for information purposes only and cannot be relied upon as a trading recommendation and does not constitute a solicitation to trade. The reported information is obtained from market sources. While every effort has been made to ensure the accuracy and the completeness of the NewConTex, VHBS e.V. makes no representations, conditions or warranties of any kind, express or implied, about the completeness, accuracy, reliability, or suitability of the NewConTex. Any reliance you place on the NewConTex is therefore strictly at your own risk. Neither VHBS e.V. nor any of its subsidiaries or affiliates nor any employee of the foregoing shall be liable or have any responsibility for any loss, liability or damage, cost or expense including without limitation, indirect or consequential loss or damage, or any loss or damage whatsoever arising from loss of data or profits arising out of, or in connection with, the use of and the reliance on the NewConTex, save for death or personal injury arising from VHBS e.V. negligence and fraudulent misrepresentation that cannot, under German law, be excluded.