

New ConTex Container Ship Time Charter Assessment Index

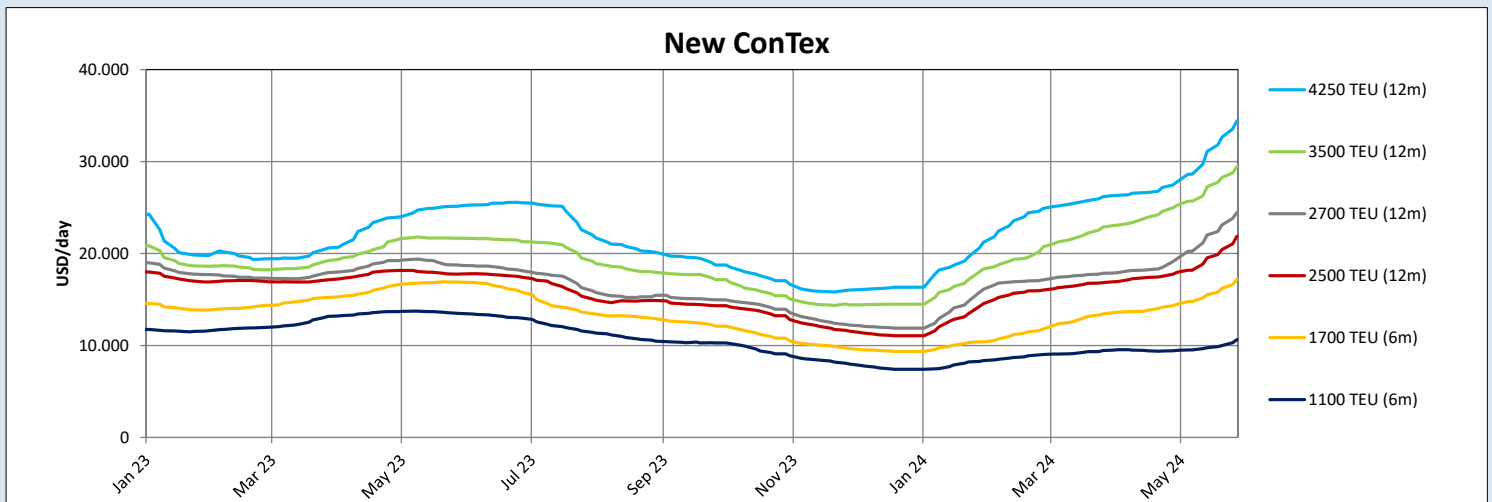
New ConTex*		981	
30.05.24		6 mos	12 mos
Geared	1100 TEU	\$10.625	n.a.
	1700 TEU	\$17.182	
	2500 TEU		\$21.873
Gearless	2700 TEU	n.a.	\$24.455
	3500 TEU		\$29.455
	4250 TEU		\$34.420

Legend		
↑	up	+ 2% or more
↗	steady up	from +1% to +1,9%
→	steady	+/- 1%
↘	steady down	from -1% to -1,9%
↓	down	- 2% or less

*New ConTex evaluation is EXCLUDING 1800 TEU for 6 months period, 1100/1700/5700/6500 TEU groups for 12 months period & 2500/2700/3500/4250 TEU groups for 24 months period

New ConTex-Commentary - issued:	30.05.24
<p>Looking at this week's New ConTex figures must bring a smile to those Owners' faces who still have prompt tonnage available. All segments are enjoying increases in the mid one-digit percentage - 1800 TEUs for 6 months even breaking the 10% on a w-o-w basis.</p> <p>The New ConTex stands at 929 points today which is a 52 points (respectively 5.6%) gain compared to last week and almost 20% (163 points) higher than at the start of the month. In comparison to previous years it's 16.8% above last year but still 70 (seventy!) percent less than at the end of May 2022...</p> <p>Was it then pushed by an expected normalization of the COVID-19 pandemic, it nowadays is rather in anticipation of a continued crisis in the Middle East (suspended Red Sea passages due to Houthi attacks).</p> <p>With the little number of available ships in the larger sizes and a continued demand on the Charterers' side, periods for all sizes of 2500 TEU and above are getting longer and consequently also rates are going up. Where Panmaxes can obtain even 3 years' employments again now, the smaller units are still a bit behind, but probably not for long anymore. Only the 1100 (and to a certain extent the 1700 TEU) sizes remain noticeably below the last year's figures. However we are also seeing higher "last dones" here, too.</p>	

New ConTex Development											
Vessel type	Evaluated Period	Today	Week-on-Week		Month-on-Month			Year-on-Year			
		30.05.24	23.05.24	Change	Change	02.05.24	Change	Change	01.06.23	Change	Change
New ConTex*		981	929	52	↑ 5,6%	818	163	↑ 19,9%	840	141	↑ 16,8%
1100 TEU	6 mos	\$10.625	\$10.000	\$625	↑ 6,3%	\$9.475	\$1.150	↑ 12,1%	\$13.471	-\$2.846	↓ -21,1%
	12 mos	\$9.907	\$9.314	\$593	↑ 6,4%	\$8.736	\$1.171	↑ 13,4%	\$12.938	-\$3.031	↓ -23,4%
1700 TEU	6 mos	\$17.182	\$16.207	\$975	↑ 6,0%	\$14.498	\$2.684	↑ 18,5%	\$16.890	\$292	↗ 1,7%
	12 mos	\$16.000	\$15.214	\$786	↑ 5,2%	\$13.736	\$2.264	↑ 16,5%	\$16.158	-\$158	↘ -1,0%
1800 TEU	6 mos	\$20.305	\$18.341	\$1.964	↑ 10,7%	\$16.293	\$4.012	↑ 24,6%	-	-	-
2500 TEU	12 mos	\$21.873	\$20.432	\$1.441	↑ 7,1%	\$17.959	\$3.914	↑ 21,8%	\$17.773	\$4.100	↑ 23,1%
	24 mos	\$18.777	\$17.723	\$1.054	↑ 5,9%	\$15.625	\$3.152	↑ 20,2%	\$16.089	\$2.688	↑ 16,7%
2700 TEU	12 mos	\$24.455	\$23.100	\$1.355	↑ 5,9%	\$19.452	\$5.003	↑ 25,7%	\$18.709	\$5.746	↑ 30,7%
	24 mos	\$20.595	\$19.600	\$995	↑ 5,1%	\$17.000	\$3.595	↑ 21,1%	\$17.148	\$3.447	↑ 20,1%
3500 TEU	12 mos	\$29.455	\$28.272	\$1.183	↑ 4,2%	\$25.265	\$4.190	↑ 16,6%	\$21.653	\$7.802	↑ 36,0%
	24 mos	\$26.150	\$24.672	\$1.478	↑ 6,0%	\$21.045	\$5.105	↑ 24,3%	\$19.633	\$6.517	↑ 33,2%
4250 TEU	12 mos	\$34.420	\$32.644	\$1.776	↑ 5,4%	\$27.810	\$6.610	↑ 23,8%	\$25.220	\$9.200	↑ 36,5%
	24 mos	\$30.595	\$29.189	\$1.406	↑ 4,8%	\$23.933	\$6.662	↑ 27,8%	\$23.438	\$7.157	↑ 30,5%
5700 TEU	12 mos	\$41.978	\$39.756	\$2.222	↑ 5,6%	\$35.767	\$6.211	↑ 17,4%	\$33.017	\$8.961	↑ 27,1%
6500 TEU	12 mos	\$48.500	\$46.338	\$2.162	↑ 4,7%	\$43.067	\$5.433	↑ 12,6%	\$37.189	\$11.311	↑ 30,4%



Disclaimer

The brand NewConTex is copyrighted by Verband Hamburger und Bremer Schiffsmakler e.V. ("VHBS e.V.") and is protected by law. The NewConTex may be published only with the source reference © VHBS e.V. It is distributed to the general public for information purposes only and cannot be relied upon as a trading recommendation and does not constitute a solicitation to trade. The reported information is obtained from market sources. While every effort has been made to ensure the accuracy and the completeness of the NewConTex, VHBS e.V. makes no representations, conditions or warranties of any kind, express or implied, about the completeness, accuracy, reliability, or suitability of the NewConTex. Any reliance you place on the NewConTex is therefore strictly at your own risk. Neither VHBS e.V. nor any of its subsidiaries or affiliates nor any employee of the foregoing shall be liable or have any responsibility for any loss, liability or damage, cost or expense including without limitation, indirect or consequential loss or damage, or any loss or damage whatsoever arising from loss of data or profits arising out of, or in connection with, the use of and the reliance on the NewConTex, save for death or personal injury arising from VHBS e.V. negligence and fraudulent misrepresentation that cannot, under German law, be excluded.