



**New ConTex
Container Ship Time Charter Assessment Index**

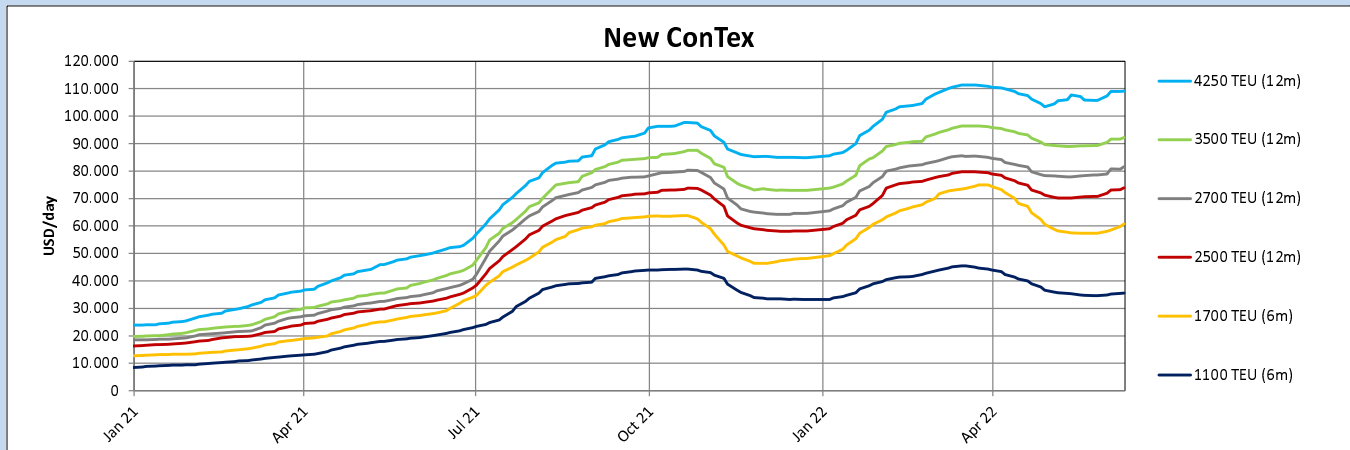
New ConTex*		3241	
09.06.22		6 mos	12 mos
Geared	1100 TEU	\$35.554	n.a.
	1700 TEU	\$60.763	
	2500 TEU		\$73.864
Gearless	2700 TEU	n.a.	\$81.641
	3500 TEU		\$92.185
	4250 TEU		\$109.150

Legend		
↑	up	+ 2% or more
↗	steady up	from +1% to +1,9%
→	steady	+/- 1 %
↘	steady down	from -1% to -1,9%
↓	down	- 2% or less

*New ConTex evaluation is EXCLUDING 1100/1700/5700/6500 TEU groups for 12 months period & 2500/2700/3500/4250 TEU groups for 24 months period

New ConTex-Commentary - issued:		09.06.22
<p>This week showed mixed signs. In the beginning of the week the smaller sizes upto/incl. 2500 TEU gained for short- and long term periods, whereas the larger ones from 2700 TEU upward lost marginally on the shorter periods.</p> <p>By the end of the week, just about all sizes and periods are back in the black.</p> <p>With the opening of Chinese ports again, the expectations seem to be more bullish again as all numbers increased well in the three-digit ranges, partly even in the four-digits.</p> <p>Only the 6500 TEU had to accept a decrease of 867 points, or .67%, this week.</p> <p>Over all, the New ConTex gained 1.25 percent w-o-w to 3241 points - a similar level we had at the end of April this year and more than twice as high this time last year, but still a bit less than 10% below its all time high in March.</p> <p>But with the present market sentiment, summer could be quite bright once more..</p>		

New ConTex Development														
Vessel type	Evaluated Period	Today	Week-on-Week				Month-on-Month			Year-on-Year				
		09.06.22	02.06.22	Change	Change	10.05.22	Change	Change	10.06.21	Change	Change			
New ConTex*		3241	3201	40	↗	1,2%	3121	120	↑	3,8%	1516	1.725	↑	113,8%
1100 TEU	6 mos	\$35.554	\$35.168	\$386	↗	1,1%	\$35.463	\$91	↗	0,3%	\$20.296	\$15.258	↑	75,2%
	12 mos	\$32.421	\$31.641	\$780	↑	2,5%	\$31.371	\$1.050	↑	3,3%	\$18.483	\$13.938	↑	75,4%
1700 TEU	6 mos	\$60.763	\$58.509	\$2.254	↑	3,9%	\$57.683	\$3.080	↑	5,3%	\$28.375	\$32.388	↑	114,1%
	12 mos	\$56.325	\$54.536	\$1.789	↑	3,3%	\$53.213	\$3.112	↑	5,8%	\$26.154	\$30.171	↑	115,4%
2500 TEU	12 mos	\$73.864	\$73.050	\$814	↗	1,1%	\$70.136	\$3.728	↑	5,3%	\$33.008	\$40.856	↑	123,8%
	24 mos	\$55.041	\$53.820	\$1.221	↑	2,3%	\$51.773	\$3.268	↑	6,3%	\$29.241	\$25.800	↑	88,2%
2700 TEU	12 mos	\$81.641	\$80.800	\$841	↗	1,0%	\$77.864	\$3.777	↑	4,9%	\$36.327	\$45.314	↑	124,7%
	24 mos	\$59.750	\$58.510	\$1.240	↑	2,1%	\$57.068	\$2.682	↑	4,7%	\$32.223	\$27.527	↑	85,4%
3500 TEU	12 mos	\$92.185	\$91.611	\$574	↗	0,6%	\$88.925	\$3.260	↗	3,7%	\$40.960	\$51.225	↑	125,1%
	24 mos	\$68.485	\$68.133	\$352	↗	0,5%	\$67.200	\$1.285	↗	1,9%	\$36.970	\$31.515	↑	85,2%
4250 TEU	12 mos	\$109.150	\$109.000	\$150	↗	0,1%	\$106.000	\$3.150	↑	3,0%	\$50.575	\$58.575	↑	115,8%
	24 mos	\$81.950	\$80.917	\$1.033	↗	1,3%	\$79.090	\$2.860	↑	3,6%	\$46.035	\$35.915	↑	78,0%
5700 TEU	12 mos	\$122.472	\$122.219	\$253	↗	0,2%	\$119.056	\$3.416	↑	2,9%	\$54.783	\$67.689	↑	123,6%
6500 TEU	12 mos	\$129.333	\$130.200	-\$867	↘	-0,7%	\$126.111	\$3.222	↑	2,6%	\$57.600	\$71.733	↑	124,5%



Disclaimer

The brand NewConTex is copyrighted by Verband Hamburger und Bremer Schiffsmakler e.V. ("VHBS e.V.") and is protected by law. The NewConTex may be published only with the source reference © VHBS e.V. It is distributed to the general public for information purposes only and can not be relied upon as a trading recommendation and does not constitute a solicitation to trade. The reported information is obtained from market sources. While every effort has been made to ensure the accuracy and the completeness of the NewConTex, VHBS e.V. makes no representations, conditions or warranties of any kind, express or implied, about the completeness, accuracy, reliability, or suitability of the NewConTex. Any reliance you place on the NewConTex is therefore strictly at your own risk. Neither VHBS e.V. nor any of its subsidiaries or affiliates nor any employee of the foregoing shall be liable or have any responsibility for any loss, liability or damage, cost or expense including without limitation, indirect or consequential loss or damage, or any loss or damage whatsoever arising from loss of data or profits arising out of, or in connection with, the use of and the reliance on the NewConTex, save for death or personal injury arising from VHBS e.V. negligence and fraudulent misrepresentation that cannot, under German law, be excluded.