



New ConTex Container Ship Time Charter Assessment Index

New ConTex*		308	
18-06-20		6 mos	12 mos
Geared	1100 TEU	\$5,325	n.a.
	1700 TEU	\$6,197	
	2500 TEU	\$6,990	
Gearless	2700 TEU	n.a.	\$7,294
	3500 TEU		\$7,754
	4250 TEU		\$7,449

Legend		
↑	up	+ 2% or more
↗	steady up	from +1% to +1,9%
→	steady	+/- 1%
↘	steady down	from -1% to -1,9%
↓	down	- 2% or less

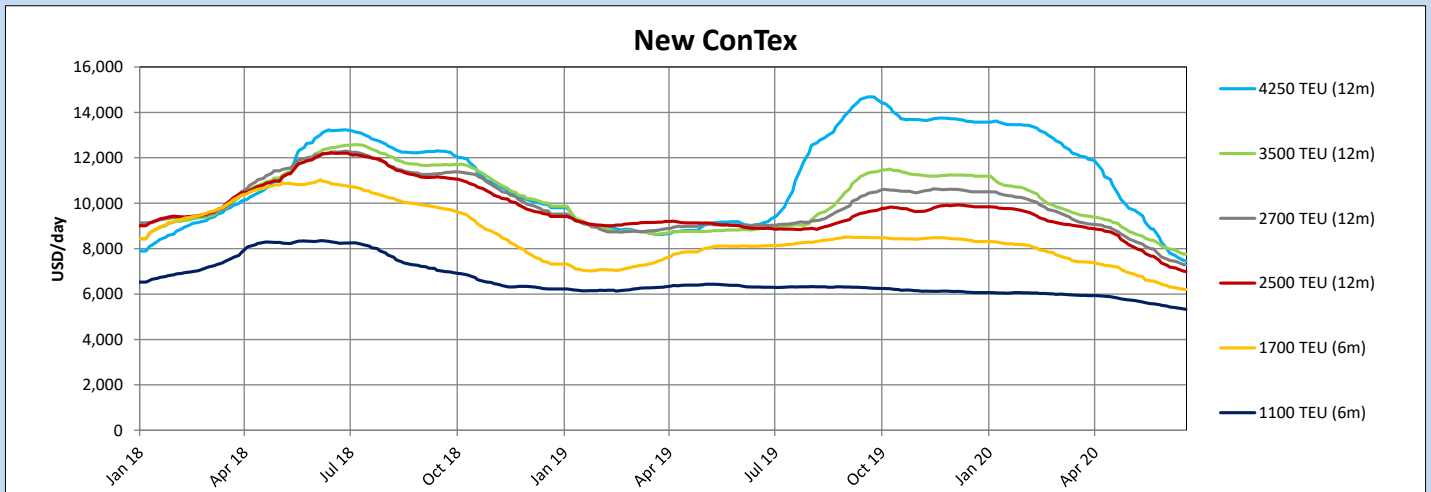
*New ConTex evaluation is EXCLUDING 1100/1700/5700/6500 TEU groups for 12 months period & 2500/2700/3500/4250 TEU groups for 24 months period

New ConTex-Commentary - issued:		18-06-20
<p>Activity in the charter market remained high, absorbing further spot tonnage. However, rates are still not following along with the development. Some of the improved fixing activity is also due to factors like drydockings and the seasonal scheduled disruptions by the typhoon season.</p> <p>While waiting on rates to recover, the New ConTex is down Week-on-Week in all segments. Same applies for the M-o-M and Y-o-Y figures. Looking at the previous month, the ConTex is down as much as 22% in the larger segments, and 4.5% in the smaller feeder sizes. The index itself is down 90 points compared to June 2019, a drop of 22%.</p> <p>On a positive note, the decline of the New ConTex is slowing down. With fixing activity continuing as in the last two weeks, it should only be a matter of time until rates start to recover. There are also opinions that rates have already bottomed out in some segments already.</p>		

New ConTex Development

Vessel type	Evaluated Period	Today 18-06-20	Week-on-Week		Month-on-Month		Year-on-Year				
			11-06-20	Change	Change	19-05-20	Change	Change	18-06-19	Change	Change
New ConTex*		308	313	(5)	↘ -1.6%	336	(28)	↘ -8.3%	398	(90)	↘ -22.6%
1100 TEU	6 mos	\$5,325	\$5,381	-\$56	↘ -1.0%	\$5,577	-\$252	↘ -4.5%	\$6,310	-\$985	↘ -15.6%
	12 mos	\$5,454	\$5,493	-\$39	↘ -0.7%	\$5,735	-\$281	↘ -4.9%	\$6,441	-\$987	↘ -15.3%
1700 TEU	6 mos	\$6,197	\$6,255	-\$58	↘ -0.9%	\$6,572	-\$375	↘ -5.7%	\$8,116	-\$1,919	↘ -23.6%
	12 mos	\$6,413	\$6,453	-\$40	↘ -0.6%	\$6,780	-\$367	↘ -5.4%	\$8,322	-\$1,909	↘ -22.9%
2500 TEU	12 mos	\$6,990	\$7,105	-\$115	↘ -1.6%	\$7,670	-\$680	↘ -8.9%	\$8,894	-\$1,904	↘ -21.4%
	24 mos	\$7,914	\$8,010	-\$96	↘ -1.2%	\$8,415	-\$501	↘ -6.0%	\$9,830	-\$1,916	↘ -19.5%
2700 TEU	12 mos	\$7,294	\$7,407	-\$113	↘ -1.5%	\$7,993	-\$699	↘ -8.7%	\$9,043	-\$1,749	↘ -19.3%
	24 mos	\$8,206	\$8,303	-\$97	↘ -1.2%	\$8,812	-\$606	↘ -6.9%	\$10,016	-\$1,810	↘ -18.1%
3500 TEU	12 mos	\$7,754	\$7,869	-\$115	↘ -1.5%	\$8,371	-\$617	↘ -7.4%	\$8,879	-\$1,125	↘ -12.7%
	24 mos	\$8,570	\$8,683	-\$113	↘ -1.3%	\$9,133	-\$563	↘ -6.2%	\$9,842	-\$1,272	↘ -12.9%
4250 TEU	12 mos	\$7,449	\$7,616	-\$167	↘ -2.2%	\$8,870	-\$1,421	↘ -16.0%	\$9,079	-\$1,630	↘ -18.0%
	24 mos	\$8,542	\$8,701	-\$159	↘ -1.8%	\$9,807	-\$1,265	↘ -12.9%	\$10,038	-\$1,496	↘ -14.9%
5700 TEU	12 mos	\$10,700	\$11,504	-\$804	↘ -7.0%	\$13,821	-\$3,121	↘ -22.6%	-	-	-
6500 TEU	12 mos	\$12,260	\$13,358	-\$1,098	↘ -8.2%	\$15,869	-\$3,609	↘ -22.7%	-	-	-

New ConTex



Disclaimer

The brand NewConTex is copyrighted by Verband Hamburger und Bremer Schiffsmakler e.V. ("VHBS e.V.") and is protected by law. The NewConTex may be published only with the source reference © VHBS e.V. It is distributed to the general public for information purposes only and cannot be relied upon as a trading recommendation and does not constitute a solicitation to trade. The reported information is obtained from market sources. While every effort has been made to ensure the accuracy and the completeness of the NewConTex, VHBS e.V. makes no representations, conditions or warranties of any kind, express or implied, about the completeness, accuracy, reliability, or suitability of the NewConTex. Any reliance you place on the NewConTex is therefore strictly at your own risk. Neither VHBS e.V. nor any of its subsidiaries or affiliates nor any employee of the foregoing shall be liable or have any responsibility for any loss, liability or damage, cost or expense including without limitation, indirect or consequential loss or damage, or any loss or damage whatsoever arising from loss of data or profits arising out of, or in connection with, the use of and the reliance on the NewConTex, save for death or personal injury arising from VHBS e.V. negligence and fraudulent misrepresentation that cannot, under German law, be excluded.