

Hamburg and Bremen Shipbrokers' Association (VHBS)

New ConTex Container Ship Time Charter Assessment Index

New ConTex*		397	
11.04.19		12 mos	24 mos
Gearless	1100 TEU	\$6.584	n.a.
	1700 TEU	\$8.088	
	2500 TEU	\$9.144	
	2700 TEU	\$8.960	
	3500 TEU	\$8.754	
	4250 TEU	\$8.773	

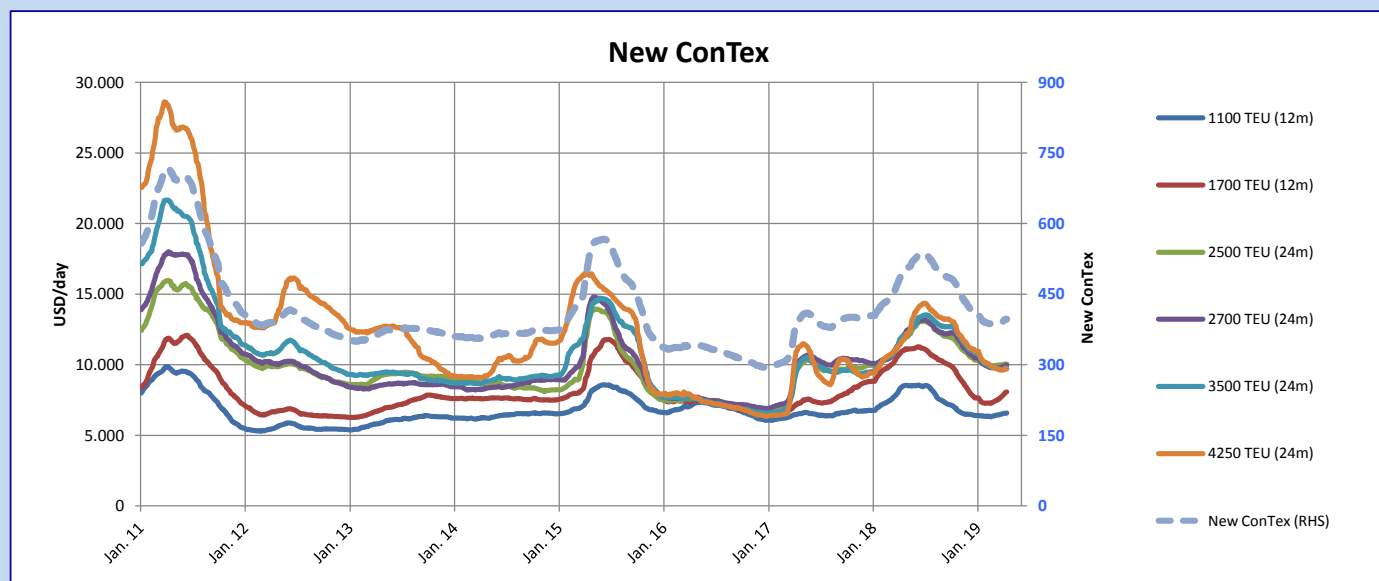
Legend		
↑	up	+ 2% or more
↗	steady up	from +1% to +1,9%
→	steady	+/- 1 %
↘	steady down	from -1% to -1,9%
↓	down	- 2% or less

*New ConTex evaluation is EXCLUDING 2500/2700/3500/4250 TEU groups for 12 months period

New ConTex-Commentary - issued:	11.04.19
<p>The New ConTex Index continued its steady (if slow) recovery, gaining just the one point to now stand at 397, tantalisingly close to the psychological 400 level.</p> <p>Looking at the market for the smaller sizes in detail, the scene remains a little uncertain. Most sizes were marked slightly up, in the range of 0.1 to 0.3% over the previous week. Only the 2500 TEUs geared were marked down (0.7% basis 12 months). The gearless types generally fared better all scoring higher levels except for slight weakness noted for the 3500 TEUs (down 0.1% basis 24 months).</p> <p>With activity levels holding steady and the supply of tonnage broadly in balance, the immediate outlook appears to be more of the same: slightly firmer levels for most sectors with one or two perhaps experiencing temporary setbacks.</p>	

New ConTex Development

Vessel type	Evaluated Period	Today	Week-on-Week				Month-on-Month			Year-on-Year				
			11.04.19	04.04.19	Change	Change	12.03.19	Change	Change	10.04.18	Change	Change		
New ConTex*		397	396	1	↗	0,3%	388	9	↑	2,3%	492	-95	-19,3%	
New ConTex	12 mos	1100 TEU	\$6.584	\$6.569	\$15	↗	0,2%	\$6.447	\$137	↑	2,1%	\$8.428	-1.844	-21,9%
		1700 TEU	\$8.088	\$8.004	\$84	↗	1,0%	\$7.522	\$566	↑	7,5%	\$10.949	-2.861	-26,1%
		2500 TEU	\$10.042	\$10.055	-\$13	↘	-0,1%	\$9.968	\$74	↗	0,7%	\$11.647	-1.605	-13,8%
	24 mos	2700 TEU	\$9.964	\$9.925	\$39	↗	0,4%	\$9.782	\$182	↗	1,9%	\$11.918	-1.954	-16,4%
		3500 TEU	\$9.740	\$9.754	-\$14	↘	-0,1%	\$9.725	\$15	↗	0,2%	\$11.948	-2.208	-18,5%
		4250 TEU	\$9.700	\$9.700	\$0	↗	0,0%	\$9.700	\$0	↗	0,0%	\$11.667	-1.967	-16,9%
12 mos	2500 TEU	\$9.144	\$9.207	-\$63	↘	-0,7%	\$9.153	-\$9	↘	-0,1%	\$10.678	-1.534	-14,4%	
	2700 TEU	\$8.960	\$8.937	\$23	↗	0,3%	\$8.763	\$197	↑	2,2%	\$10.931	-1.971	-18,0%	
	3500 TEU	\$8.754	\$8.750	\$4	↗	0,0%	\$8.725	\$29	↗	0,3%	\$10.727	-1.973	-18,4%	
	4250 TEU	\$8.773	\$8.748	\$25	↗	0,3%	\$8.733	\$40	↗	0,5%	\$10.385	-1.612	-15,5%	



Disclaimer

The brand NewConTex is copyrighted by Verband Hamburger und Bremer Schiffsmakler e.V. ("VHBS e.V.") and is protected by law. The NewConTex may be published only with the source reference © VHBS e.V. It is distributed to the general public for information purposes only and cannot be relied upon as a trading recommendation and does not constitute a solicitation to trade. The reported information is obtained from market sources. While every effort has been made to ensure the accuracy and the completeness of the NewConTex, VHBS e.V. makes no representations, conditions or warranties of any kind, express or implied, about the completeness, accuracy, reliability, or suitability of the NewConTex. Any reliance you place on the NewConTex is therefore strictly at your own risk. Neither VHBS e.V. nor any of its subsidiaries or affiliates nor any employee of the foregoing shall be liable or have any responsibility for any loss, liability or damage, cost or expense including without limitation, indirect or consequential loss or damage, or any loss or damage whatsoever arising from loss of data or profits arising out of, or in connection with, the use of and the reliance on the NewConTex, save for death or personal injury arising from VHBS e.V. negligence and fraudulent misrepresentation that cannot, under German law, be excluded.