



New ConTex Container Ship Time Charter Assessment Index

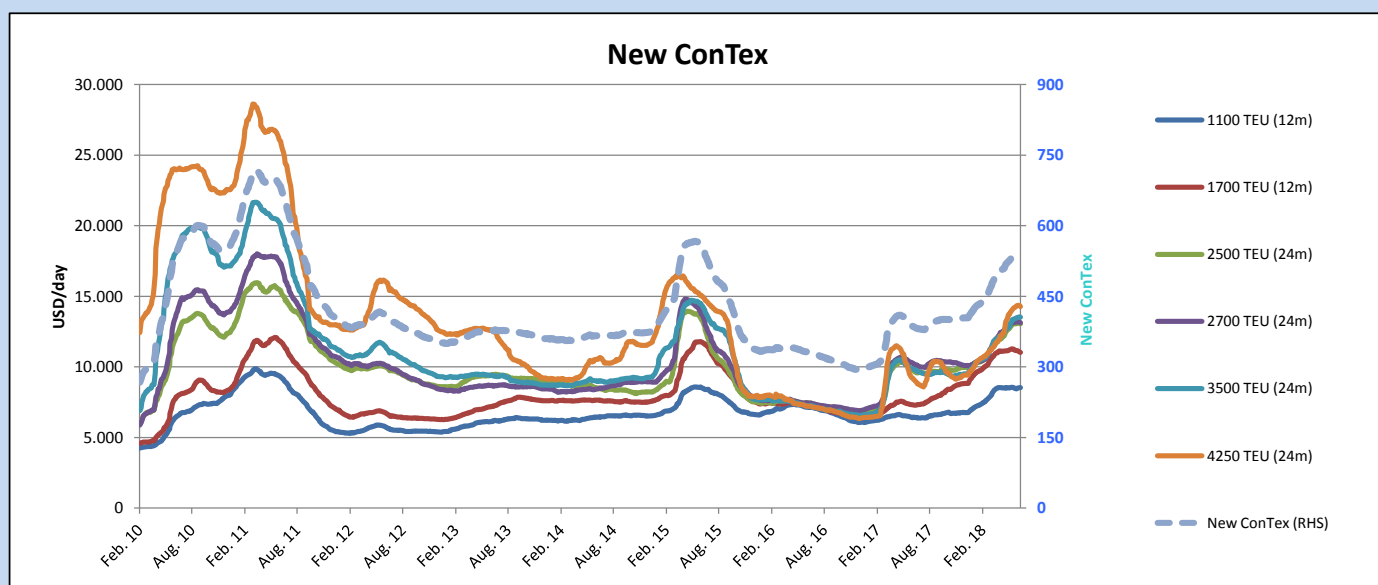
New ConTex*		534	
		05.07.18	12 mos
Gearless	1100 TEU	\$8.543	n.a.
	1700 TEU	\$11.028	
	2500 TEU	\$12.139	\$13.050
Gearless	2700 TEU	\$12.246	\$13.133
	3500 TEU	\$12.578	\$13.530
	4250 TEU	\$13.139	\$14.274

Legend		
↑	up	+ 2% or more
↗	steady up	from +1% to +1,9%
→	steady	+/- 1%
↘	steady down	from -1% to -1,9%
↓	down	- 2% or less

*New ConTex evaluation is EXCLUDING 2500/2700/3500/4250 TEU groups for 12 months period

New ConTex-Commentary - issued:	05.07.18
<p>The New ConTex lost this week one point compared to a week ago but is still 39 % higher than a year ago. The summer holidays in the northern hemisphere are beginning to take their toll on the charter market, with a reduced overall volume of activity, although some segments remain busy. The weaker demand is resulting in a higher supply of tonnage, with the pool of spot ships slowly increasing, especially in the classic Panamax segment and between 1,500 and 2,000 teu. Nothing to worry about at this stage for owners, considering the time of the year, but demand will need to rise soon to avoid a further piling up of tonnage. Charter rates have meanwhile ceased to rise, and will probably remain in standstill throughout the slow summer weeks.</p>	

New ConTex Development												
Vessel type	Evaluated Period	Today	Week-on-Week				Month-on-Month			Year-on-Year		
		05.07.18	28.06.18	Change	Change	05.06.18	Change	Change	04.07.17	Change	Change	
New ConTex*		534	535	-1	↔ -0,2%	532	2	0,4%	384	150	39,1%	
New ConTex	12 mos	1100 TEU	\$8.543	\$8.509	\$34	↗ 0,4%	\$8.552	-\$9	-0,1%	\$6.416	2.127	33,2%
		1700 TEU	\$11.028	\$11.113	-\$85	↘ -0,8%	\$11.281	-\$253	-2,2%	\$7.292	3.736	51,2%
		2500 TEU	\$13.050	\$13.113	-\$63	↘ -0,5%	\$12.945	\$105	0,8%	\$9.654	3.396	35,2%
	24 mos	2700 TEU	\$13.133	\$13.197	-\$64	↘ -0,5%	\$13.091	\$42	0,3%	\$10.155	2.978	29,3%
		3500 TEU	\$13.530	\$13.516	\$14	↗ 0,1%	\$13.218	\$312	2,4%	\$9.808	3.722	37,9%
		4250 TEU	\$14.274	\$14.363	-\$89	↘ -0,6%	\$13.987	\$287	2,1%	\$9.021	5.253	58,2%
12 mos	2500 TEU	\$12.139	\$12.200	-\$61	↘ -0,5%	\$12.117	\$22	0,2%	\$8.697	3.442	39,6%	
	2700 TEU	\$12.246	\$12.289	-\$43	↘ -0,3%	\$12.142	\$104	0,9%	\$9.172	3.074	33,5%	
	3500 TEU	\$12.578	\$12.551	\$27	↗ 0,2%	\$12.267	\$311	2,5%	\$8.588	3.990	46,5%	
	4250 TEU	\$13.139	\$13.226	-\$87	↘ -0,7%	\$13.010	\$129	1,0%	\$7.571	5.568	73,5%	



Disclaimer

The brand NewConTex is copyrighted by Vereinigung Hamburger Schiffsmakler und Schiffsagenten e. V. ("VHSS e.V.") and is protected by law. The NewConTex may be published only with the source reference © VHSS e.V. It is distributed to the general public for information purposes only and cannot be relied upon as a trading recommendation and does not constitute a solicitation to trade. The reported information is obtained from market sources. While every effort has been made to ensure the accuracy and the completeness of the NewConTex, VHSS e.V. makes no representations, conditions or warranties of any kind, express or implied, about the completeness, accuracy, reliability, or suitability of the NewConTex. Any reliance you place on the NewConTex is therefore strictly at your own risk. Neither VHSS e.V. nor any of its subsidiaries or affiliates nor any employee of the foregoing shall be liable or have any responsibility for any loss, liability or damage, cost or expense including without limitation, indirect or consequential loss or damage, or any loss or damage whatsoever arising from loss of data or profits arising out of, or in connection with, the use of and the reliance on the NewConTex, save for death or personal injury arising from VHSS e.V. negligence and fraudulent misrepresentation that cannot, under German law, be excluded.