



New ConTex Container Ship Time Charter Assessment Index

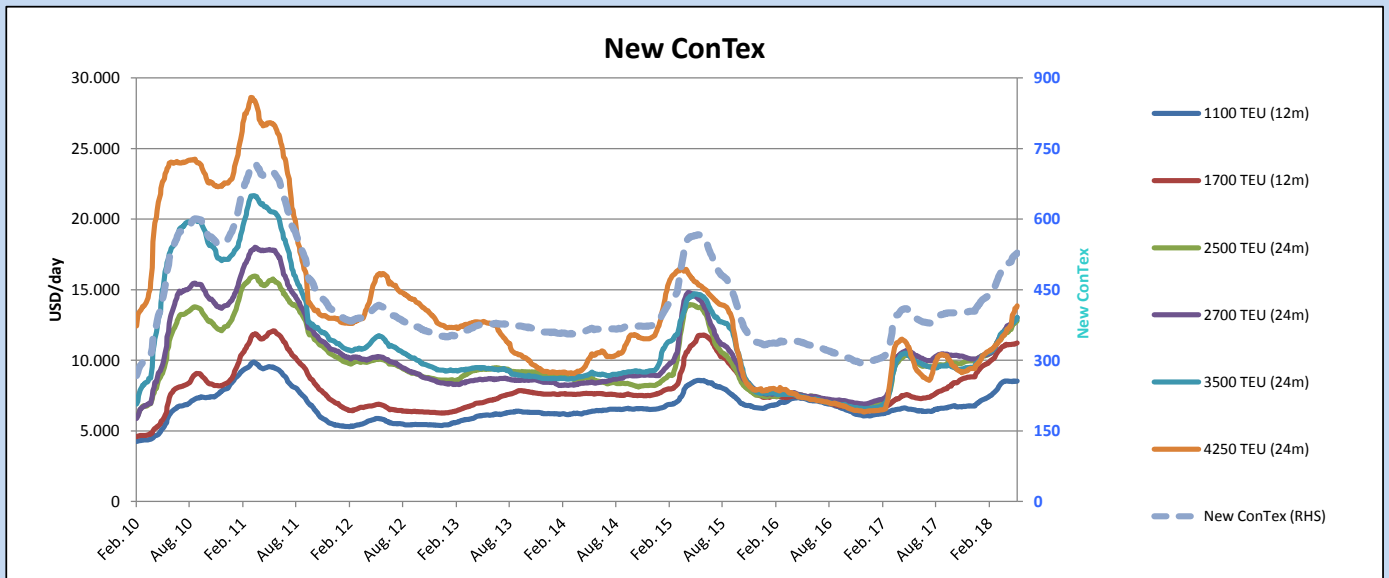
New ConTex*		528	
		31.05.18	12 mos
Gearless	1100 TEU	\$8.524	n.a.
	1700 TEU	\$11.234	
	2500 TEU	\$11.985	\$12.824
Gearless	2700 TEU	\$12.112	\$13.023
	3500 TEU	\$12.160	\$13.042
	4250 TEU	\$12.849	\$13.860

Legend		
↑	up	+ 2% or more
↗	steady up	from +1% to +1,9%
→	steady	+/- 1%
↘	steady down	from -1% to -1,9%
↓	down	- 2% or less

*New ConTex evaluation is EXCLUDING 2500/2700/3500/4250 TEU groups for 12 months period

New ConTex-Commentary - issued:	31.05.18
<p>The New ConTex is again, in the same way as one week before, improving by about 0,8 pct or 4 points up to now 528 in total. Same is again been driven by the larger panamax vessels of 4250 TEU plus the 3500 TEU segment which basis 12 Month charter both increased by 1,8 pct.</p> <p>The 2500 TEU and 2700 TEU increased by 1,1 pct respectively 1,0 pct showing that there seem to be still a shortage of tonnage enabling Owners to obtain further improved rates and longer charter periods.</p> <p>The 1700 TEU and 1100 TEU segment remained stable with rates more or less in line with last done levels. Compared to a month ago the Index moved again almost 5 pct up and on YOY basis even 30 pct.</p> <p>The sentiment in general remains positive with the Owners and although higher bunker prices and possible pressure on box freight rates the New ConTex is expected to remain steady.</p>	

		New ConTex Development									
Vessel type	Evaluated Period	Today	Week-on-Week		Month-on-Month			Year-on-Year			
		31.05.18	24.05.18	Change	Change	01.05.18	Change	Change	30.05.17	Change	Change
New ConTex*		528	524	4	↗ 0,8%	505	23	4,6%	404	124	30,7%
New ConTex	1100 TEU	\$8.524	\$8.518	\$6	↗ 0,1%	\$8.522	\$2	0,0%	\$6.545	1.979	30,2%
	1700 TEU	\$11.234	\$11.170	\$64	↗ 0,6%	\$11.095	\$139	1,3%	\$7.460	3.774	50,6%
	2500 TEU	\$12.824	\$12.672	\$152	↗ 1,2%	\$11.995	\$829	6,9%	\$10.283	2.541	24,7%
	2700 TEU	\$13.023	\$12.929	\$94	↗ 0,7%	\$12.438	\$585	4,7%	\$10.624	2.399	22,6%
	3500 TEU	\$13.042	\$12.830	\$212	↗ 1,7%	\$12.213	\$829	6,8%	\$10.256	2.786	27,2%
	4250 TEU	\$13.860	\$13.688	\$172	↗ 1,3%	\$12.211	\$1.649	13,5%	\$10.592	3.268	30,9%
	2500 TEU	\$11.985	\$11.858	\$127	↗ 1,1%	\$10.981	\$1.004	9,1%	\$9.355	2.630	28,1%
	2700 TEU	\$12.112	\$11.991	\$121	↗ 1,0%	\$11.428	\$684	6,0%	\$9.613	2.499	26,0%
	3500 TEU	\$12.160	\$11.940	\$220	↗ 1,8%	\$11.106	\$1.054	9,5%	\$9.100	3.060	33,6%
	4250 TEU	\$12.849	\$12.625	\$224	↗ 1,8%	\$10.958	\$1.891	17,3%	\$9.002	3.847	42,7%



Disclaimer

The brand NewConTex is copyrighted by Vereinigung Hamburger Schiffsmakler und Schiffsagenten e. V. ("VHSS e.V.") and is protected by law. The NewConTex may be published only with the source reference © VHSS e.V. It is distributed to the general public for information purposes only and cannot be relied upon as a trading recommendation and does not constitute a solicitation to trade. The reported information is obtained from market sources. While every effort has been made to ensure the accuracy and the completeness of the NewConTex, VHSS e.V. makes no representations, conditions or warranties of any kind, express or implied, about the completeness, accuracy, reliability, or suitability of the NewConTex. Any reliance you place on the NewConTex is therefore strictly at your own risk. Neither VHSS e.V. nor any of its subsidiaries or affiliates nor any employee of the foregoing shall be liable or have any responsibility for any loss, liability or damage, cost or expense including without limitation, indirect or consequential loss or damage, or any loss or damage whatsoever arising from loss of data or profits arising out of, or in connection with, the use of and the reliance on the NewConTex, save for death or personal injury arising from VHSS e.V. negligence and fraudulent misrepresentation that cannot, under German law, be excluded.