



## New ConTex Container Ship Time Charter Assessment Index

New ConTex*		332	
07.07.16		12 mos	24 mos
Geared	1100 TEU	\$7,147	n.a.
	1700 TEU	\$7,312	
	2500 TEU	\$6,084	\$7,444
Gearless	2700 TEU	\$6,208	\$7,434
	3500 TEU	\$5,553	\$7,266
	4250 TEU	\$5,068	\$7,225

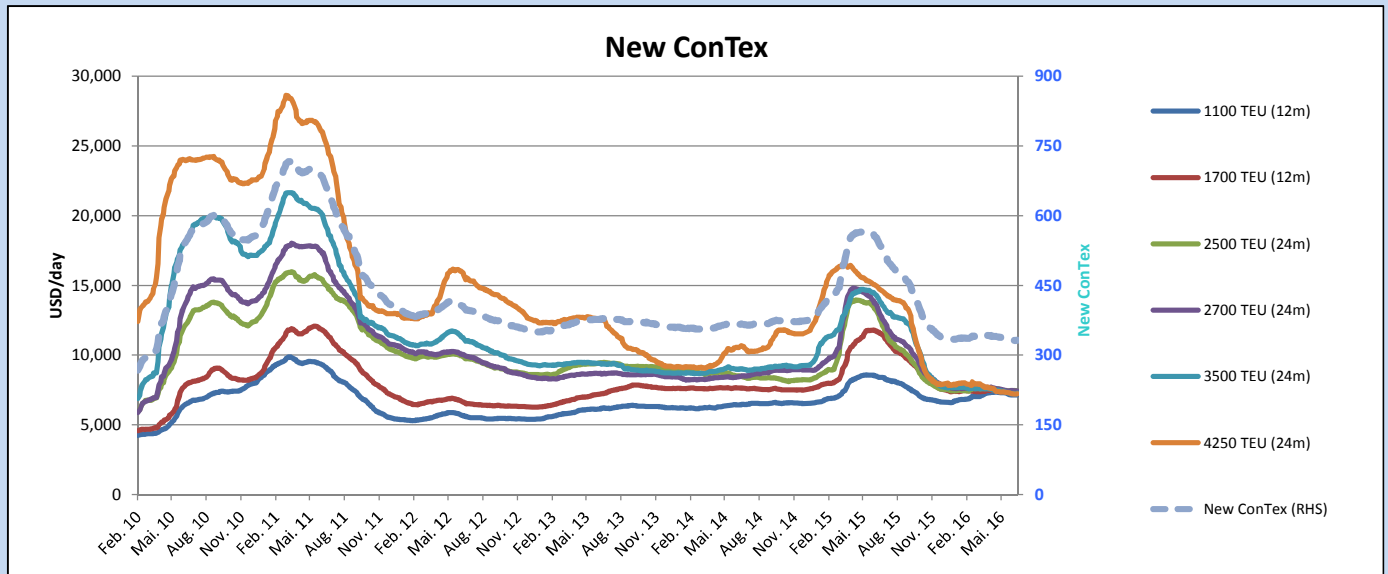
Legend		
↑	up	+ 2% or more
↗	steady up	from +1% to +1,9%
→	steady	+/- 1%
↘	steady down	from -1% to -1,9%
↓	down	- 2% or less

\*New ConTex evaluation is EXCLUDING 2500/2700/3500/4250 TEU groups for 12 months period

New ConTex-Commentary - issued:	07.07.16
<p>The New ConTex Index managed to recover the one point lost last week and once again stands at 332. However a closer look at the components shows a rather mixed scene with no clear or definite trend being discernable.</p> <p>In the smaller sizes the 1100 TEU class scored a modest increase of 0.2% week-on-week whereas the 1700 TEU class shed 0.3% over the same period.</p> <p>In the mid sizes the 2500 TEUs geared class has been marked down whilst the 2700 TEU gearless class has made a slight gain on the week.</p> <p>In both the larger sizes (3500 and 4250 TEUs gearless) the 12 months rates have both been marked lower (the 3500s particularly so, at nearly 1% week-on-week) yet the 24 months rates have risen.</p> <p>Given the time of year, this lack of trend is not unusual.</p>	

### New ConTex Development

Vessel type	Evaluated Period	Today	Week-on-Week				Month-on-Month			Year-on-Year			
			07.07.16	30.06.16	Change	Change	07.06.16	Change	Change	07.07.15	Change	Change	
<b>New ConTex*</b>		<b>332</b>	331	1	↔	0.3%	335	-3	-0.9%	542	-210	-38.7%	
New ConTex	12 mos	1100 TEU	\$7,147	\$7,134	\$13	↔	0.2%	\$7,271	-\$124	-1.7%	\$8,395	-1,248	-14.9%
		1700 TEU	\$7,312	\$7,332	-\$20	↔	-0.3%	\$7,424	-\$112	-1.5%	\$11,636	-4,324	-37.2%
	24 mos	2500 TEU	\$7,444	\$7,450	-\$6	↔	-0.1%	\$7,447	-\$3	0.0%	\$12,842	-5,398	-42.0%
		2700 TEU	\$7,434	\$7,428	\$6	↔	0.1%	\$7,467	-\$33	-0.4%	\$13,173	-5,739	-43.6%
		3500 TEU	\$7,266	\$7,225	\$41	↔	0.6%	\$7,333	-\$67	-0.9%	\$14,018	-6,752	-48.2%
4250 TEU	\$7,225	\$7,212	\$13	↔	0.2%	\$7,332	-\$107	-1.5%	\$14,785	-7,560	-51.1%		
New ConTex	12 mos	2500 TEU	\$6,084	\$6,122	-\$38	↔	-0.6%	\$6,063	\$21	0.3%	\$11,632	-5,548	-47.7%
		2700 TEU	\$6,208	\$6,203	\$5	↔	0.1%	\$6,169	\$39	0.6%	\$12,088	-5,880	-48.6%
		3500 TEU	\$5,553	\$5,602	-\$49	↔	-0.9%	\$5,665	-\$112	-2.0%	\$13,042	-7,489	-57.4%
		4250 TEU	\$5,068	\$5,094	-\$26	↔	-0.5%	\$5,167	-\$99	-1.9%	\$13,592	-8,524	-62.7%



**Disclaimer**

The brand NewConTex is copyrighted by Vereinigung Hamburger Schiffsmakler und Schiffsagenten e.V. ("VHSS e.V.") and is protected by law. The NewConTex may be published only with the source reference © VHSS e.V. It is distributed to the general public for information purposes only and cannot be relied upon as a trading recommendation and does not constitute a solicitation to trade. The reported information is obtained from market sources. While every effort has been made to ensure the accuracy and the completeness of the NewConTex, VHSS e.V. makes no representations, conditions or warranties of any kind, express or implied, about the completeness, accuracy, reliability, or suitability of the NewConTex. Any reliance you place on the NewConTex is therefore strictly at your own risk. Neither VHSS e.V. nor any of its subsidiaries or affiliates nor any employee of the foregoing shall be liable or have any responsibility for any loss, liability or damage, cost or expense including without limitation, indirect or consequential loss or damage, or any loss or damage whatsoever arising from loss of data or profits arising out of, or in connection with, the use of and the reliance on the NewConTex, save for death or personal injury arising from VHSS e.V. negligence and fraudulent misrepresentation that cannot, under German law, be excluded.