



New ConTex Container Ship Time Charter Assessment Index

New ConTex*		475	
03.09.15		12 mos	24 mos
Gearless	1100 TEU	\$7.966	n.a.
	1700 TEU	\$10.111	
	2500 TEU	\$9.201	\$10.371
Gearless	2700 TEU	\$9.833	\$11.011
	3500 TEU	\$11.557	\$12.619
	4250 TEU	\$12.665	\$13.842

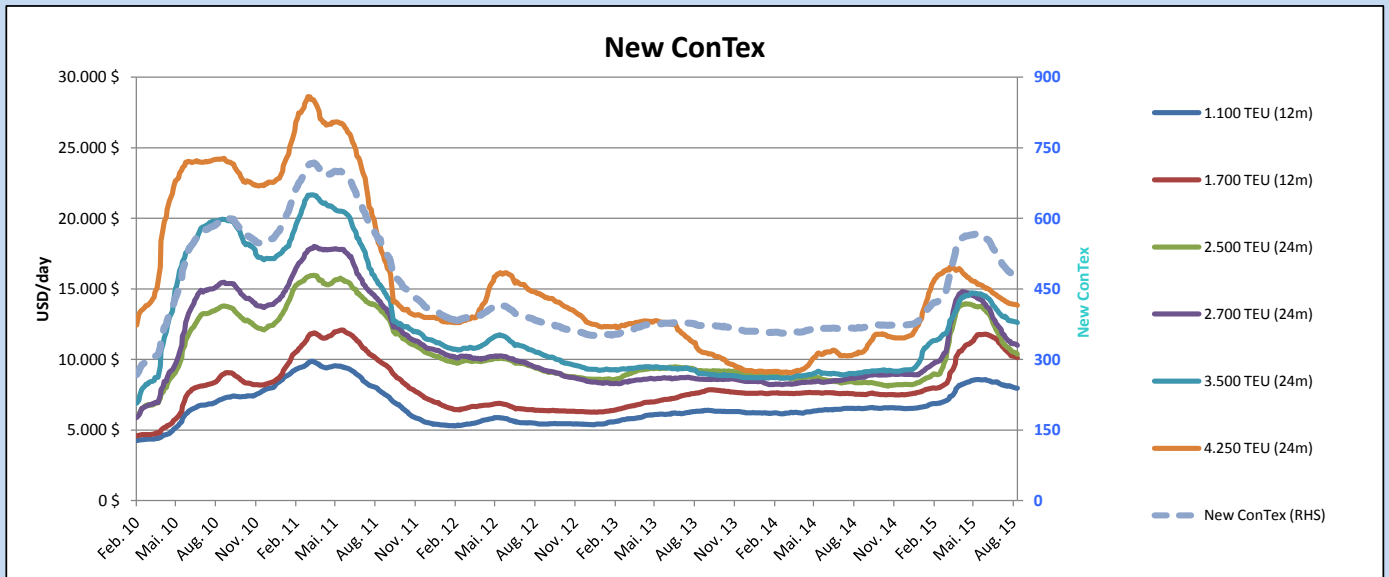
Legend		
↑	up	+ 2% or more
↗	steady up	from +1% to +1,9%
→	steady	+/- 1%
↘	steady down	from -1% to -1,9%
↓	down	- 2% or less

*New ConTex evaluation is EXCLUDING 2500/2700/3500/4250 TEU groups for 12 months period

New ConTex-Commentary - issued:	03.09.15
<p>Entering the month of September, the New ConTex lost another 4 points this week to a level of 475 points on the index. These four points equals -0,8%. The segment of 2500 TEU suffered the biggest losses during the past days with -1,2% (equal to USD 124,-) for the 24 months period, resp. - 1,1% (equal to USD 105,-) for the 12 months period evaluation.</p> <p>Though all other classes also finished the week with negative prefixes, the w-o-w losses with values between - 0,4 and -0,9 % are becoming more moderate.</p> <p>Looking back to the previous years, we have - according to the law of the series - an active chartering period ahead of us with strengthening market conditions, however, the macroeconomic news from various directions tell us for the time being a different story, i.e. the positive sentiment for a substantial market recovery is missing yet.</p>	

New ConTex Development

Vessel type	Evaluated Period	Today	Week-on-Week		Month-on-Month			Year-on-Year				
		03.09.15	27.08.15	Change	Change	04.08.15	Change	Change	02.09.14	Change	Change	
New ConTex*		475	479	-4	↘ -0,8%	498	-23	-4,6%	367	108	29,4%	
New ConTex	12 mos	1100 TEU	\$7.966	\$8.012	-\$46	↘ -0,6%	\$8.185	-\$219	-2,7%	\$6.530	1.436	22,0%
		1700 TEU	\$10.111	\$10.206	-\$95	↘ -0,9%	\$10.793	-\$682	-6,3%	\$7.541	2.570	34,1%
		2500 TEU	\$10.371	\$10.495	-\$124	↘ -1,2%	\$11.048	-\$677	-6,1%	\$8.352	2.019	24,2%
	24 mos	2700 TEU	\$11.011	\$11.114	-\$103	↘ -0,9%	\$11.732	-\$721	-6,1%	\$8.721	2.290	26,3%
		3500 TEU	\$12.619	\$12.672	-\$53	↘ -0,4%	\$12.992	-\$373	-2,9%	\$9.035	3.584	39,7%
		4250 TEU	\$13.842	\$13.916	-\$74	↘ -0,5%	\$14.208	-\$366	-2,6%	\$10.400	3.442	33,1%
New ConTex	12 mos	2500 TEU	\$9.201	\$9.306	-\$105	↘ -1,1%	\$9.905	-\$704	-7,1%	\$7.295	1.906	26,1%
		2700 TEU	\$9.833	\$9.877	-\$44	↘ -0,4%	\$10.549	-\$716	-6,8%	\$7.851	1.982	25,2%
		3500 TEU	\$11.557	\$11.664	-\$107	↘ -0,9%	\$11.972	-\$415	-3,5%	\$7.823	3.734	47,7%
		4250 TEU	\$12.665	\$12.713	-\$48	↘ -0,4%	\$13.091	-\$426	-3,3%	\$8.869	3.796	42,8%



Disclaimer

The brand NewConTex is copyrighted by Vereinigung Hamburger Schiffsmakler und Schiffsagenten e.V. ("VHSS e.V.") and is protected by law. The NewConTex may be published only with the source reference © VHSS e.V. It is distributed to the general public for information purposes only and cannot be relied upon as a trading recommendation and does not constitute a solicitation to trade. The reported information is obtained from market sources. While every effort has been made to ensure the accuracy and the completeness of the NewConTex, VHSS e.V. makes no representations, conditions or warranties of any kind, express or implied, about the completeness, accuracy, reliability, or suitability of the NewConTex. Any reliance you place on the NewConTex is therefore strictly at your own risk. Neither VHSS e.V. nor any of its subsidiaries or affiliates nor any employee of the foregoing shall be liable or have any responsibility for any loss, liability or damage, cost or expense including without limitation, indirect or consequential loss or damage, or any loss or damage whatsoever arising from loss of data or profits arising out of, or in connection with, the use of and the reliance on the NewConTex, save for death or personal injury arising from VHSS e.V. negligence and fraudulent misrepresentation that cannot, under German law, be excluded.